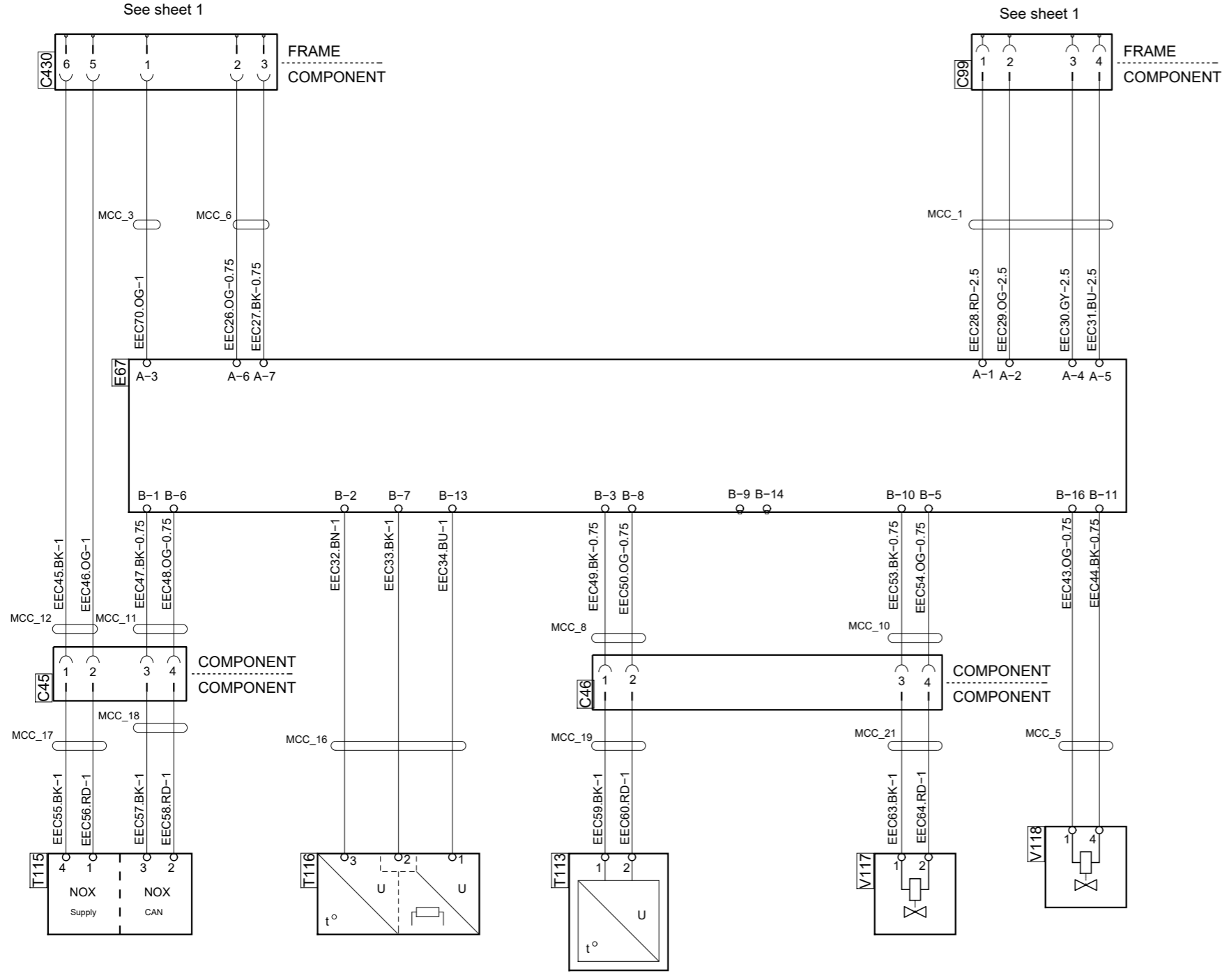


Colour code of electric cables	
Code	Colour
BK	Black
BN	Brown
RD	Red
OG	Orange
YE	Yellow
GN	Green
BU	Blue
VT	Violet
GY	Grey
WH	White
PK	Pink

Des.	Pos.	Description
C45	B 4	Connector, 4-pole
C46	B 3	Connector, 4-pole
C99	C 2	Connector, 4-pole
C430	C 4	Connector, 7-pole
E67	B 2	Control unit, EEC
T113	A 3	Sensor, temp, upstream
T115	A 4	Sensor, nox
T116	A 3	Sensor unit, temperature/level
V117	A 2	Dosing unit
V118	A 2	Water valve, EEC



See sheet 1

See sheet 1

C

C

B

B

A

Valid for double front axles



Circuit Diagram:

EEC

Drawing No.- 1529086-2-7  
Sheet-Rev:

N.B. The copyright and ownership of this drawing including associated computer data are and will remain ours. They must not be copied, used or brought to the attention of any third party without prior permission (C) Scania, Sweden