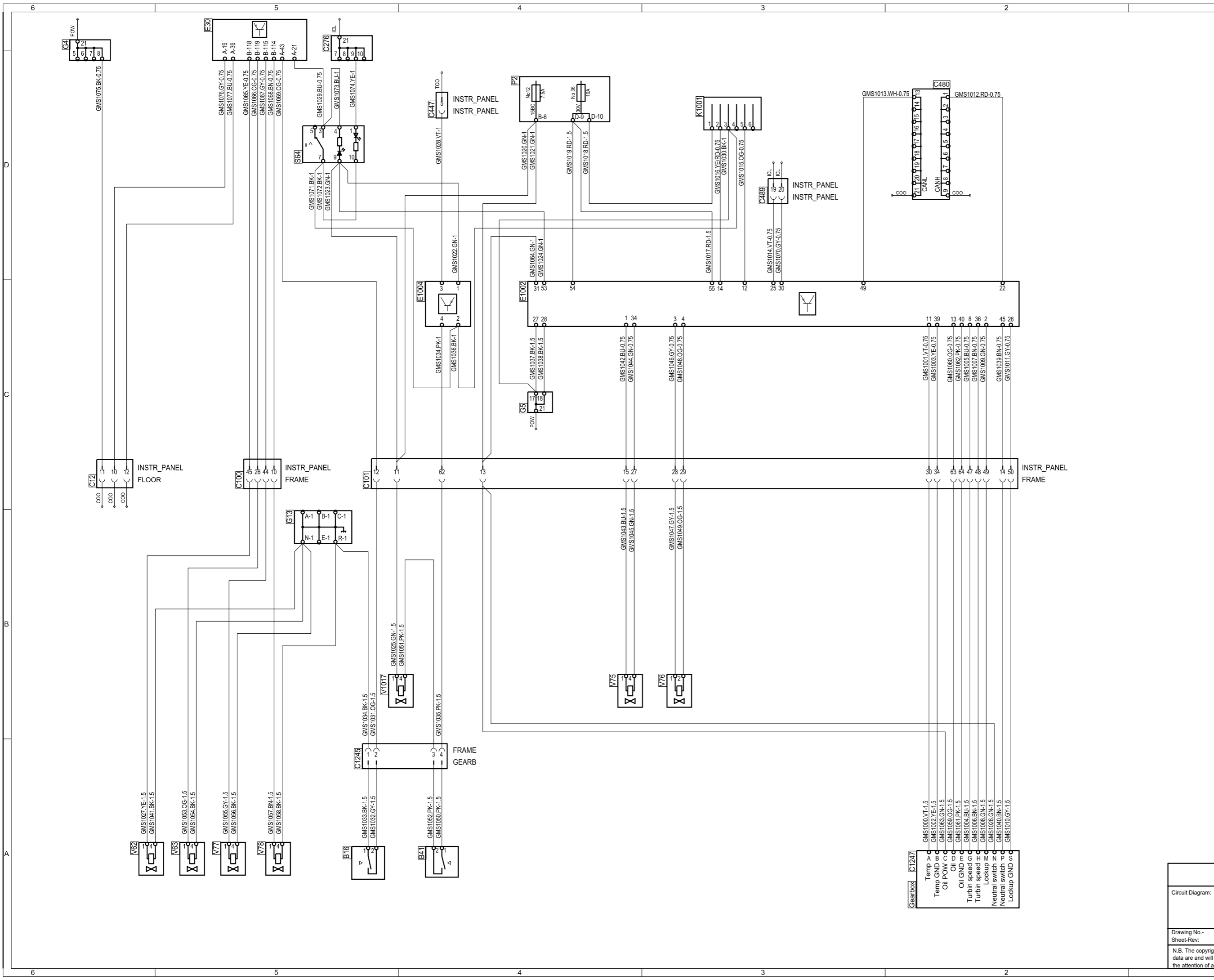


Des.	Pos.	Description
B16	A 5	Switch, reverse light
B41	A 4	Switch, high range
C12	C 6	Connector, 21-pole
C100	C 5	Connector, 66-pole
C101	C 5	Connector, 66-pole
C276	E 5	Joint connector, instr light
C447	D 4	Connector, 6-pole, SMS/BWS
C480	D 2	Joint connector red CAN
C489	D 3	Connector, 21-pole, BWS
C1245	A 5	Connector, 4-pole, Frame/gearbox
C1247	A 2	Connector, 19-pole, Frame/gearbox
E30	E 5	Control unit, coordinator
E1002	C 2	Control unit, ZF
E1004	C 2	Control unit, Overspeedprot. gate interf
G4	E 6	Joint connector, ground
G5	C 4	Joint connector, ground
G13	B 5	Ground, torpedo wall
K1001	D 3	Diagnostics socket
P2	D 4	Central electric unit
S64	D 5	Switch, Converter lockup
V62	A 5	Solenoid valve, low split
V63	A 5	Solenoid valve, low range
V75	B 3	Solenoid valve, accumulator
V76	B 3	Solenoid valve, proportional
V77	A 5	Solenoid valve, high split
V78	A 5	Solenoid valve, high range
V1017	B 4	Solenoid valve, Gate interlock



**SCANIA**

Circuit Diagram:

**GMS ZF transmatic**

Drawing No.- 1744998-1-4  
Sheet-Rev.

N.B. The copyright and ownership of this drawing including associated computer data are and will remain ours. They must not be copied, used or brought to the attention of any third party without prior permission (C) Scania, Sweden