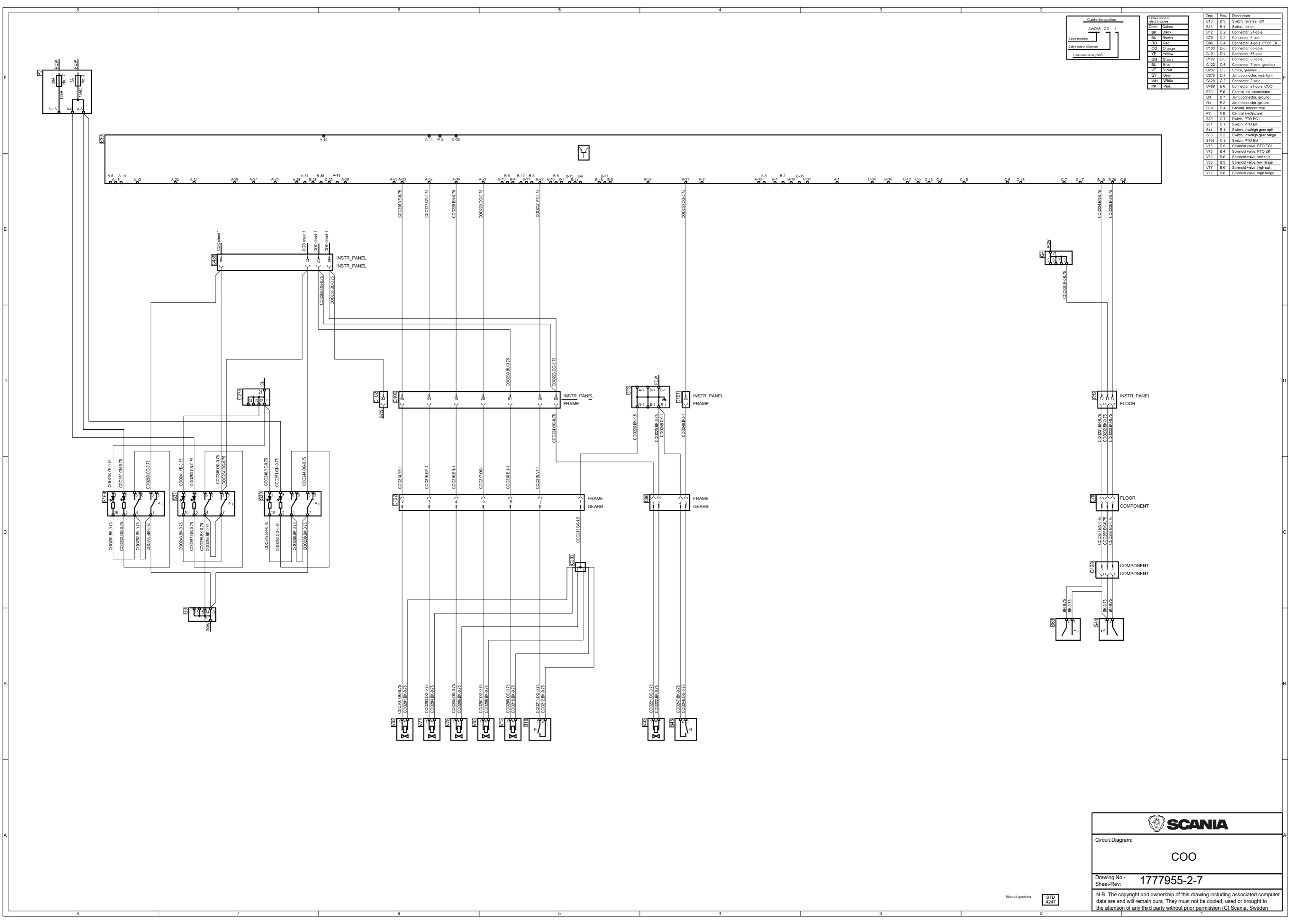


Desk	Pos	Description
B16	B 5	Switch, reverse light
B45	B 4	Switch, neutral
C08	C08	Colour
BK	Black	
C12	D 2	Connector, 21-pole
C70	C 2	Connector, 3-pole
C96	C 4	Connector, 4-pole, PTO1 EK
C100	D 6	Connector, 66-pole
C101	D 4	Connector, 66-pole
C102	D 6	Connector, 66-pole
C122	C 6	Connector, 7-pole, gearbox
C202	C 5	Splint, gearbox
VT	Virol	
GV	Grey	
WH	White	
PK	Pink	
E30	F 6	Control unit, coordinator
G3	B 7	Joint connector, ground
G4	E 2	Joint connector, ground
G13	D 4	Ground, torpedo wall
P2	F 8	Central electric unit
S30	C 7	Switch, PTO EG1
S31	C 7	Switch, PTO EK
S44	B 1	Switch, low/high gear split
S63	B 2	Switch, low/high gear range
S148	C 6	Switch, PTO ED
V13	B 5	Solenoid valve, PTO EG1
V43	B 4	Solenoid valve, PTO EK
V62	B 6	Solenoid valve, low split
V63	B 5	Solenoid valve, low range
V77	B 6	Solenoid valve, high split
V78	B 6	Solenoid valve, high range



SCANIA

Circuit Diagram:
COO

Drawing No.-
Sheet-Rev: **1777955-2-7**

N.B. The copyright and ownership of this drawing including associated computer data are and will remain ours. They must not be copied, used or brought to the attention of any third party without prior permission (C) Scania, Sweden