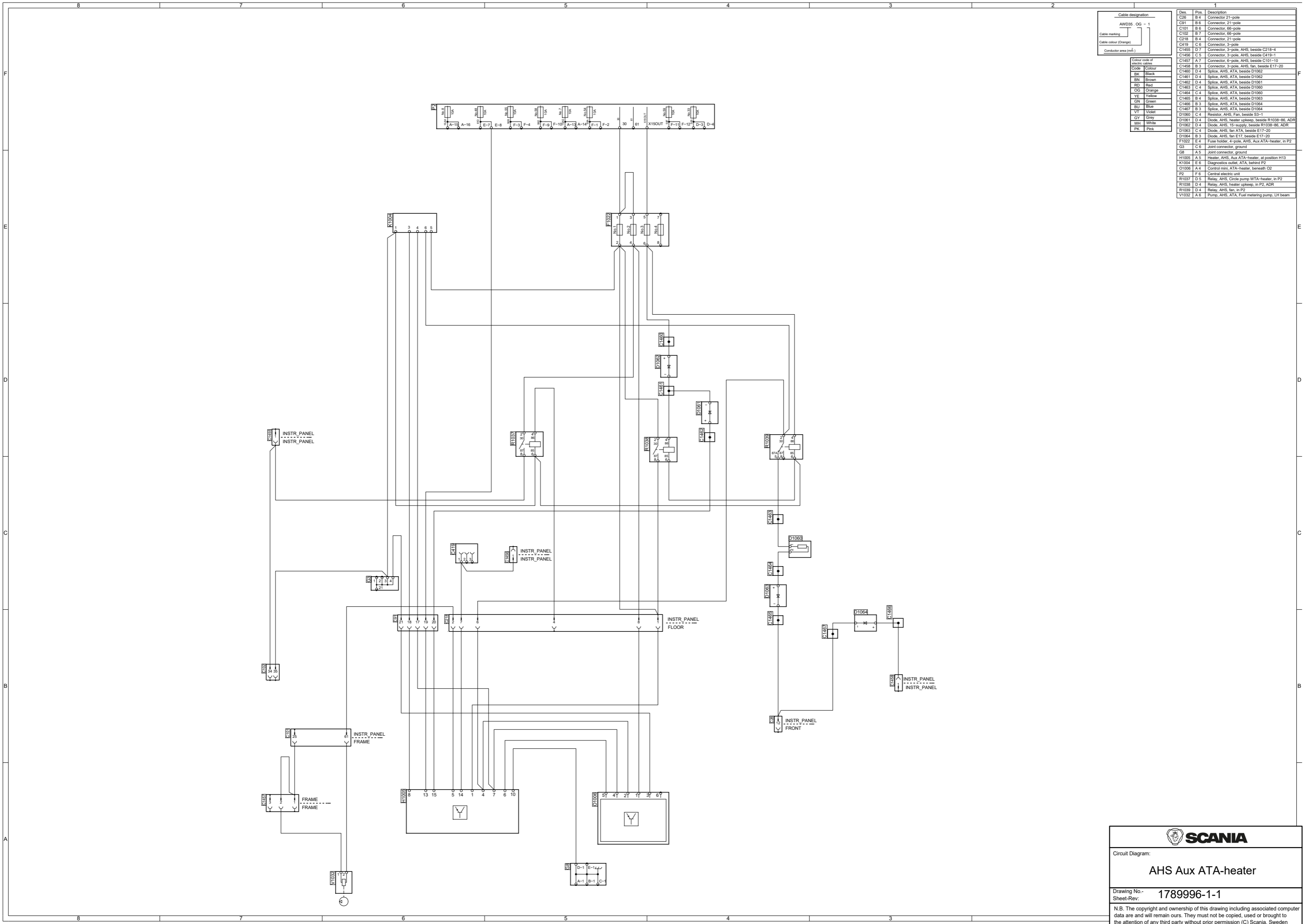


Des.	Pos.	Description
C26	B 4	Connector 21-pole
C91	B 6	Connector 21-pole
C101	B 6	Connector 66-pole
C102	B 7	Connector 66-pole
C218	B 4	Connector 21-pole
C419	C 6	Connector 3-pole
C1455	D 7	Connector 3-pole, AHS, beside C218-4
C1456	C 5	Connector 3-pole, AHS, beside C219-1
C1457	A 7	Connector 6-pole, AHS, beside C101-10
C1458	B 3	Connector 3-pole, AHS, fan, beside E17-20
C1459	D 4	Splice, AHS, ATA, beside D1062
C1461	D 4	Splice, AHS, ATA, beside D1062
C1462	D 4	Splice, AHS, ATA, beside D1061
C1463	C 4	Splice, AHS, ATA, beside D1060
C1464	C 4	Splice, AHS, ATA, beside D1060
C1465	B 4	Splice, AHS, ATA, beside D1063
C1466	B 3	Splice, AHS, ATA, beside D1064
C1467	B 3	Splice, AHS, ATA, beside D1064
D1060	C 4	Resistor, AHS, Fan, beside S3-1
D1061	D 4	Diode, AHS, heater upkeep, beside R1038-86, ADR
D1062	D 4	Diode, AHS, 15-supply, beside R1038-86, ADR
D1063	C 4	Diode, AHS, fan ATA, beside E17-20
D1064	B 3	Diode, AHS, fan E17, beside E17-20
F1022	E 4	Fuse holder, 4-pole, AHS, Aux ATA-heater, in P2
G3	C 6	Joint connector, ground
G8	A 5	Joint connector, ground
H1005	A 5	Heater, AHS, Aux ATA-heater, at position H13
K1004	E 6	Diagnostics outlet, ATA, behind P2
O1006	A 4	Control unit, ATA-heater, beneath C2
P2	F 6	Central electric unit
R1037	D 5	Relay, AHS, Circle pump WTA-heater, in P2
R1038	D 4	Relay, AHS, heater upkeep, in P2, ADR
R1039	D 4	Relay, AHS, fan, in P2
Y1032	A 6	Pump, AHS, ATA, Fuel metering pump, LH beam



**SCANIA**

Circuit Diagram:  
**AHS Aux ATA-heater**

Drawing No.-  
Sheet-Rev: **1789996-1-1**

N.B. The copyright and ownership of this drawing including associated computer data are and will remain ours. They must not be copied, used or brought to the attention of any third party without prior permission (C) Scania, Sweden