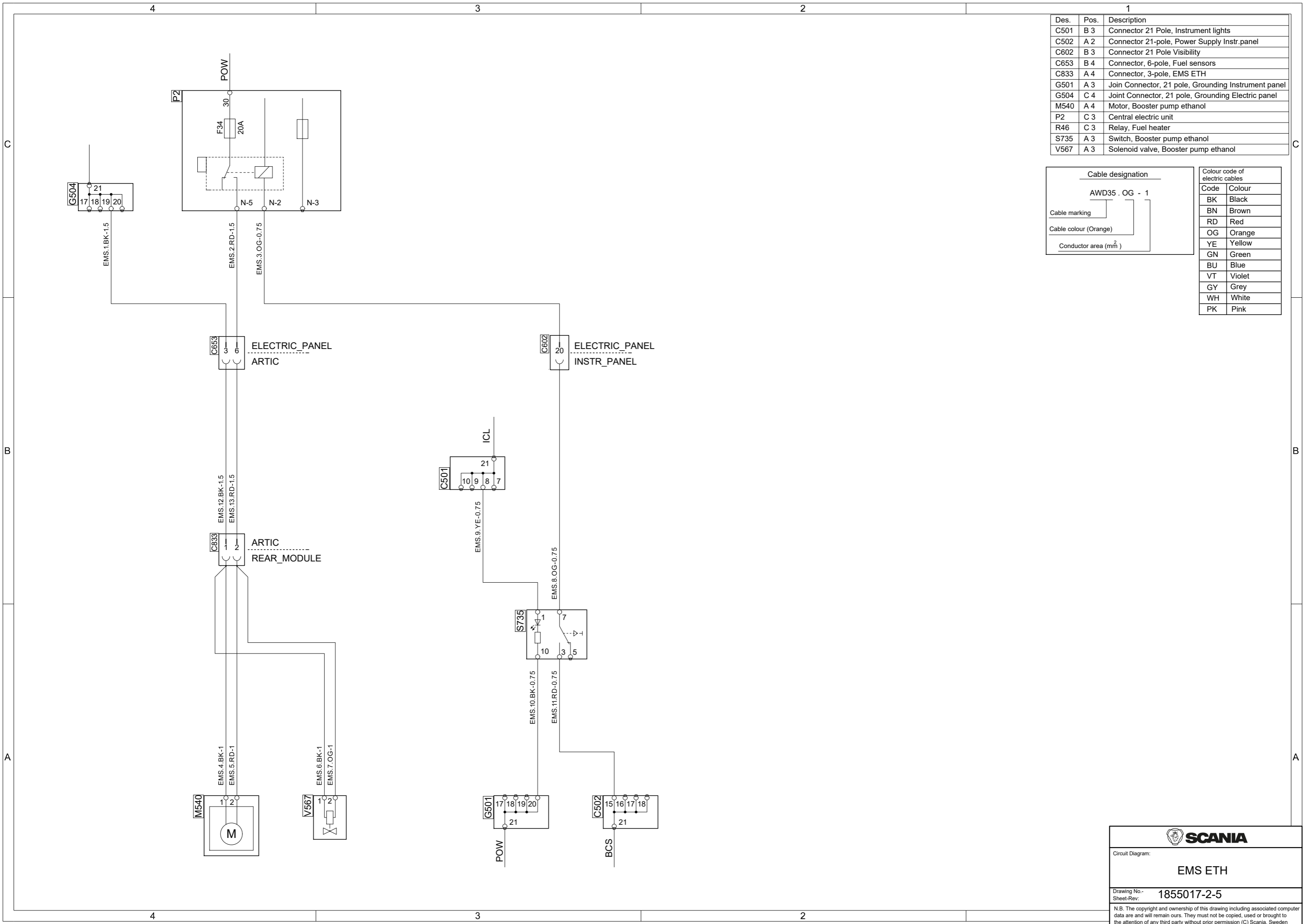


Des.	Pos.	Description
C501	B 3	Connector 21 Pole, Instrument lights
C502	A 2	Connector 21-pole, Power Supply Instr.panel
C602	B 3	Connector 21 Pole Visibility
C653	B 4	Connector, 6-pole, Fuel sensors
C833	A 4	Connector, 3-pole, EMS ETH
G501	A 3	Join Connector, 21 pole, Grounding Instrument panel
G504	C 4	Joint Connector, 21 pole, Grounding Electric panel
M540	A 4	Motor, Booster pump ethanol
P2	C 3	Central electric unit
R46	C 3	Relay, Fuel heater
S735	A 3	Switch, Booster pump ethanol
V567	A 3	Solenoid valve, Booster pump ethanol

Cable designation	
AWD35 . OG - 1	
Cable marking	
Cable colour (Orange)	
Conductor area (mm ²)	

Colour code of electric cables	
Code	Colour
BK	Black
BN	Brown
RD	Red
OG	Orange
YE	Yellow
GN	Green
BU	Blue
VT	Violet
GY	Grey
WH	White
PK	Pink



SCANIA

Circuit Diagram:
EMS ETH

Drawing No.-
Sheet-Rev: **1855017-2-5**

N.B. The copyright and ownership of this drawing including associated computer data are and will remain ours. They must not be copied, used or brought to the attention of any third party without prior permission (C) Scania, Sweden