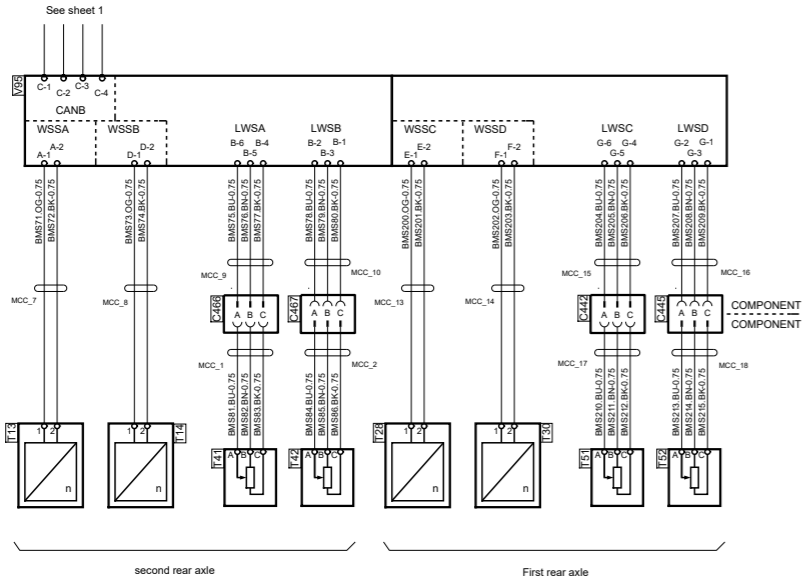
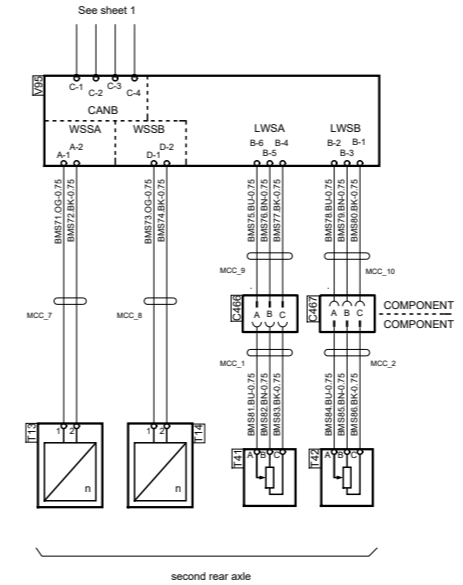


Cable designation		Colour code of	Des.	Pos.	Description
AWD35 OC - 1		Code	CB1	E 2	Connector 3-pole
Cable marking		Colour	CB2	E 2	Connector 3-pole
Cable colour (Orange)		BN	CB42	E 6	Connector 3-pole
Conductor area (mm ²)		RB	C445	E 6	Connector 3-pole
		OG	C466	E 7	Connector 3-pole
		YE	C467	E 7	Connector 3-pole
		GN	T13	E 8	Sensor speed, rear LH
		BI	T13	E 4	Sensor speed, rear LH
		VI	T14	E 8	Sensor speed, rear RH
		GY	T14	E 4	Sensor speed, rear RH
		WH	T28	E 7	Sensor speed, add 16ch LH
		PK	T28	E 3	Sensor speed, add 16ch LH
			T30	E 7	Sensor speed, add 16ch RH
			T30	E 3	Sensor speed, add 16ch RH
			T41	E 4	Sensor lining wear, rear LH
			T41	E 7	Sensor lining wear, rear LH
			T42	E 3	Sensor lining wear, rear RH
			T42	E 7	Sensor lining wear, rear RH
			T51	E 2	Sensor lining wear, add1 LH
			T51	E 6	Sensor lining wear, add1 LH
			T52	E 2	Sensor lining wear, add1 RH
			T52	E 6	Sensor lining wear, add1 RH
			V86	F 2	Pressure control module, add 1
			V95	F 3	Pressure control module, rear
			V95	F 6	Pressure control module, rear



Tandem drive with leaf suspension
Tandem drive with air suspension and without load transfer



Tandem drive with air suspension and with load transfer

S-order equipment connected

SCANIA

Circuit Diagram:

BMS EBS

Drawing No.-
Sheet-Rev: **2063601-2-9**

N.B. The copyright and ownership of this drawing including associated computer data are and will remain ours. They must not be copied, used or brought to the attention of any third party without prior permission (C) Scania, Sweden