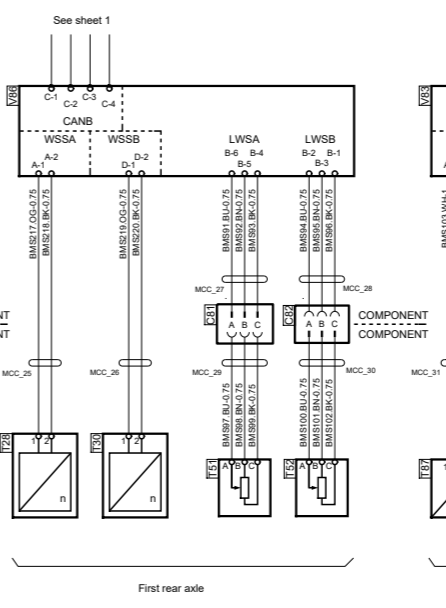
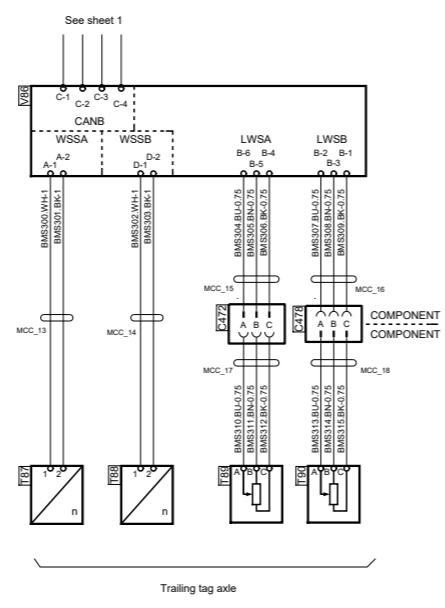
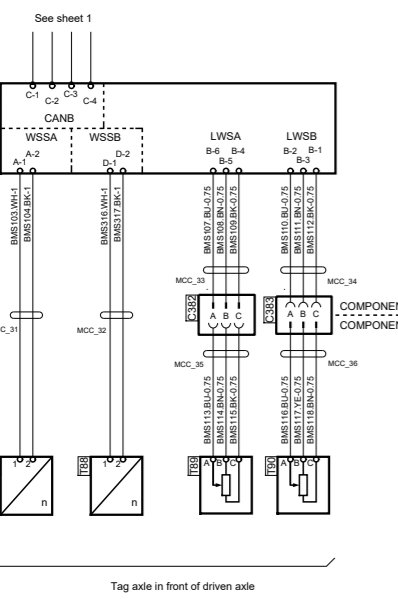


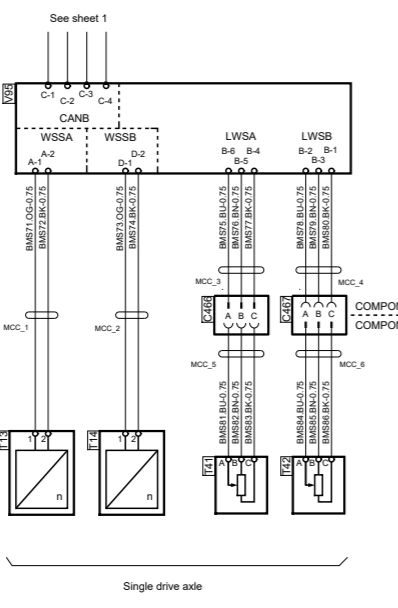
Tandem drive with trailing tag axle without load transfer
8x4.4



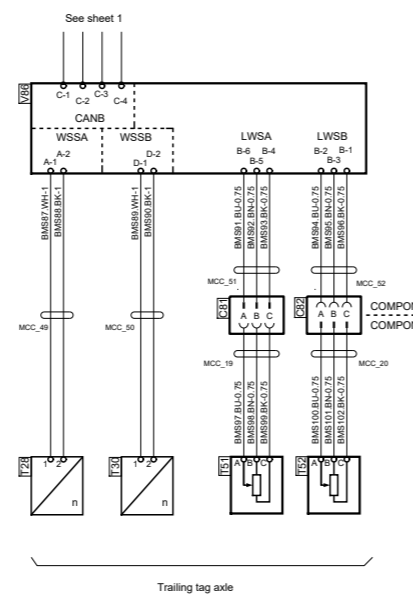
Tandem drive with trailing tag axle with load transfer
8x4.4



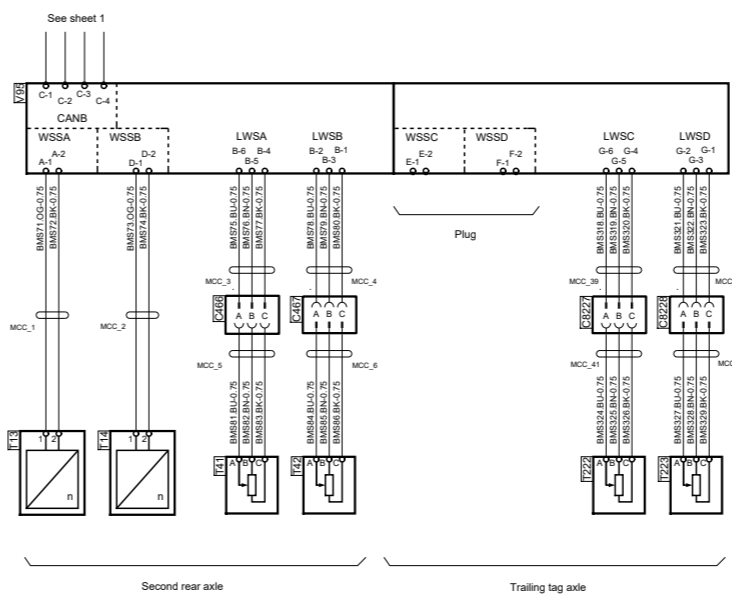
Single drive with two tag axles
8x2.4



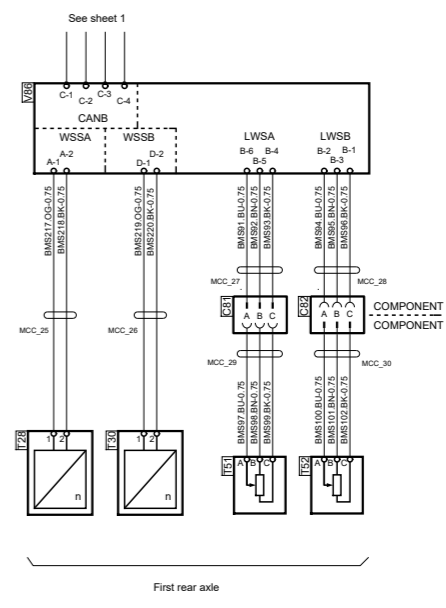
Single drive axle



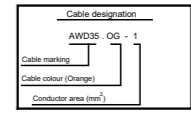
Trailing tag axle



Tandem drive with trailing tag axle
10x4.6



First rear axle



Colour code of	Des.	Pos.	Description
BN	C81	B 2	Connector 3-pole
BN	C81	E 3	Connector 3-pole
BN	C82	B 2	Connector 3-pole
BN	C82	B 5	Connector 3-pole
BN	C82	E 3	Connector 3-pole
BN	C82	B 8	Connector 3-pole
BN	C82	E 2	Connector 3-pole
BN	C83	B 7	Connector 3-pole
BN	C83	E 2	Connector 3-pole
BN	C42	E 7	Connector 3-pole
BN	C44	E 6	Connector 3-pole
BN	C46	B 4	Connector 3-pole
BN	C46	E 4	Connector 3-pole
BN	C46	E 8	Connector 3-pole
BN	C47	B 4	Connector 3-pole
BN	C47	E 4	Connector 3-pole
BN	C47	E 7	Connector 3-pole
BN	C47	E 5	Connector 3-pole
BN	C47	E 3	Connector 3-pole
BN	C227	B 3	Connector 3-pole
BN	C228	B 3	Connector 3-pole
BN	T13	B 4	Sensor speed, rear LH
BN	T13	B 7	Sensor speed, rear LH
BN	T13	E 4	Sensor speed, rear LH
BN	T13	E 8	Sensor speed, rear LH
BN	T14	B 2	Sensor speed, rear RH
BN	T14	B 7	Sensor speed, rear RH
BN	T14	E 4	Sensor speed, rear RH
BN	T14	E 8	Sensor speed, rear RH
BN	T28	B 2	Sensor speed, add 1/6ch LH
BN	T28	E 7	Sensor speed, add 1/6ch LH
BN	T28	E 3	Sensor speed, add 1/6ch LH
BN	T30	B 6	Sensor speed, add 1/6ch RH
BN	T30	E 3	Sensor speed, add 1/6ch RH
BN	T41	B 4	Sensor lining wear, rear LH
BN	T41	E 4	Sensor lining wear, rear LH
BN	T41	E 7	Sensor lining wear, rear LH
BN	T42	B 4	Sensor lining wear, rear RH
BN	T42	E 6	Sensor lining wear, rear RH
BN	T42	E 4	Sensor lining wear, rear RH
BN	T42	E 7	Sensor lining wear, rear RH
BN	T51	B 5	Sensor, lining wear, add1 LH
BN	T51	E 3	Sensor, lining wear, add1 LH
BN	T51	E 7	Sensor, lining wear, add1 LH
BN	T52	B 2	Sensor, lining wear, add1 RH
BN	T52	E 5	Sensor, lining wear, add1 RH
BN	T52	E 3	Sensor, lining wear, add1 RH
BN	T52	E 6	Sensor, lining wear, add1 RH
BN	T87	B 8	Sensor speed, LH
BN	T87	E 2	Sensor speed, LH
BN	T87	E 6	Sensor speed, LH
BN	T88	B 8	Sensor speed, RH
BN	T88	E 2	Sensor speed, RH
BN	T88	E 6	Sensor speed, RH
BN	T89	B 8	Sensor, lining wear, LH
BN	T89	E 2	Sensor, lining wear, LH
BN	T89	E 6	Sensor, lining wear, LH
BN	T90	B 7	Sensor, lining wear, RH
BN	T90	E 2	Sensor, lining wear, RH
BN	T90	E 6	Sensor, lining wear, RH
BN	T223	B 3	Sensor, lining wear, LH
BN	V83	C 7	Pressure control module, add2
BN	V85	F 2	Pressure control module, add2
BN	V86	C 2	Pressure control module, add1
BN	V86	C 5	Pressure control module, add1
BN	V86	F 3	Pressure control module, add1
BN	V86	F 5	Pressure control module, add1
BN	V95	C 3	Pressure control module, rear
BN	V95	C 6	Pressure control module, rear
BN	V95	F 4	Pressure control module, rear
BN	V95	F 8	Pressure control module, rear

SCANIA

Circuit Diagram: **BMS EBS**

Drawing No.- **2063601-3-2**
Sheet-Rev:

N.B. The copyright and ownership of this drawing including associated computer data are and will remain ours. They must not be copied, used or brought to the attention of any third party without prior permission (C) Scania, Sweden