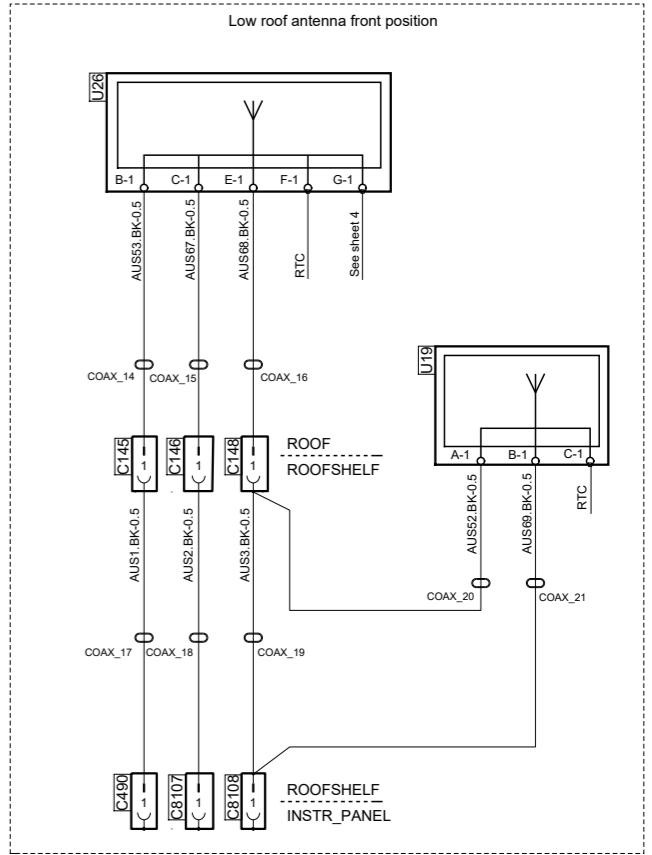


Cable designation		Colour code of electric cables		Des.	Pos.	Description
AWD35 . OG - 1		Code	Colour	C18	C 3	Connector, 15-pole
Cable marking		BK	Black	C19	D 3	Connector, 21-pole, Instr-Roof
Cable colour (Orange)		BN	Brown	C25	C 3	Connector, 15-pole
Conductor area (mm ²)		RD	Red	C145	D 2	Connector, 1-pole
		OG	Orange	C146	D 2	Connector, 1-pole
		YE	Yellow	C490	D 6	Connector, 1-pole
		GN	Green	C8107	B 8	Connector, 21-pole
		BU	Blue	C8107	D 6	Connector, 1-pole
		VT	Violet	C8108	D 6	Connector, 1-pole
		GY	Grey	C8128	B 5	Socket, USB data
		WH	White	E130	D 3	Control unit, infotainment system
		PK	Pink	G3-3	E 7	Splice, ground
				G8-3	B 7	Splice, ground
				N3	D 4	Loud speaker, treble driver
				N4	E 3	Loud speaker, treble passenger
				N5	E 3	Loud speaker, CB-radio
				N16	A 8	Subwoofer
				N20	B 3	Loud speaker, door driver
				N21	B 3	Loud speaker, door passenger
				O1	B 6	Instrument cluster
				P2.BX50	F 8	Fuse socket, CEU
				P2.CX151	F 7	Fuse socket, CEU
				P2.CX155	F 7	Fuse socket, CEU
				S4	F 8	Switch, starter
				U18	B 5	Aux radio input
				U19	D 1	Aerial splitter
				U19	F 5	Aerial splitter
				U24	F 4	Microphone
				U26	E 1	Aerial, FM/AM, DAB, MOB, GPS
				U26	F 5	Aerial, FM/AM, DAB, MOB, GPS



Notes:
 1. Standard
 2. Entry
 3. With C300
 4. Screen is connected to housings.
 For instruction, see corresponding Bundle Drawings

AUS Standard & Entry

SCANIA

Circuit Diagram:
AUS

Drawing No.-
 Sheet-Rev: **2086546-1-22**

N.B. The copyright and ownership of this drawing including associated computer data are and will remain ours. They must not be copied, used or brought to the attention of any third party without prior permission (C) Scania, Sweden