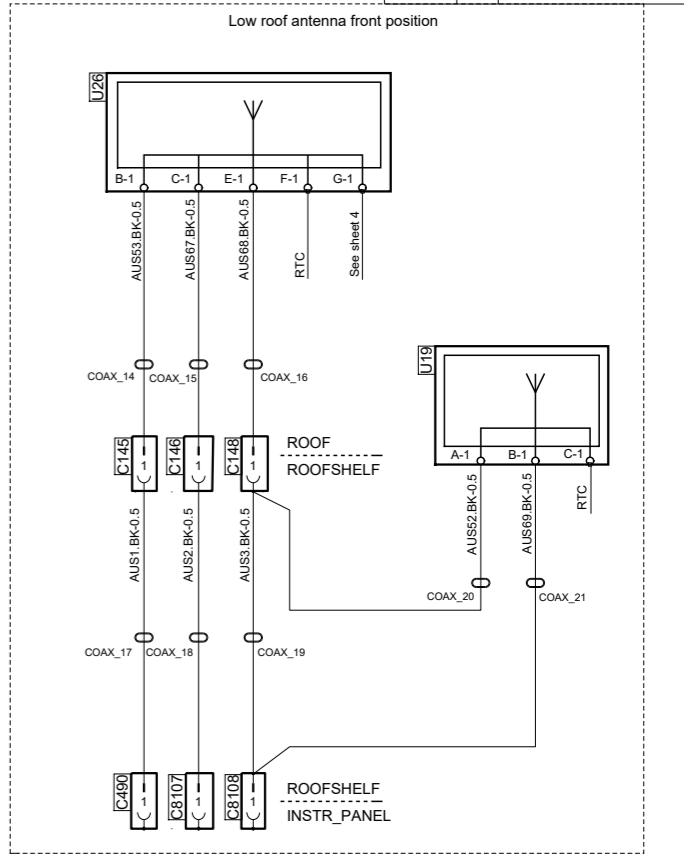


Code	Colour	Des.	Pos.	Description
C18		C18	C 3	Connector, 15-pole
C19		C19	D 3	Connector, 21-pole, Instr-Roof
C25		C 3	C 3	Connector, 15-pole
BN	Brown	C145	D 2	Connector, 1-pole
RD	Red	C146	D 2	Connector, 1-pole
OG	Orange	C148	D 2	Connector, 1-pole
YE	Yellow	C490	D 6	Connector, 1-pole
GN	Green	C8105	B 8	Connector, 21-pole
BU	Blue	C8107	D 6	Connector, 1-pole
VT	Violet	C8108	D 6	Connector, 1-pole
GY	Grey	C8128	B 5	Socket, USB data
WH	White	E130	D 3	Control unit, Infotainment system
PK	Pink	G3-3	E 7	Splice, ground
		G8-3	B 7	Splice, ground
		N3	D 4	Loud speaker, treble driver
		N4	E 3	Loud speaker, treble passenger
		N5	E 3	Loud speaker, CB-radio
		N16	A 8	Subwoofer
		N20	B 3	Loud speaker, door driver
		N21	B 3	Loud speaker, door passenger
		O1	B 6	Instrument cluster
		P2.BX50	F 8	Fuse socket, CEU
		P2.CX151	F 7	Fuse socket, CEU
		P2.CX155	F 7	Fuse socket, CEU
		S4	F 8	Switch, starter
		U18	B 5	Aux radio input
		U19	D 1	Aerial splitter
		U19	F 5	Aerial splitter
		U24	F 4	Microphone
		U26	E 1	Aerial, FM/AM, DAB, MOB, GPS
		U26	F 5	Aerial, FM/AM, DAB, MOB, GPS



Notes:
 1. Standard
 2. Entry
 3. With C300
 4. Screen is connected to housings.
 For instruction, see corresponding Bundle Drawings

AUS Standard & Entry

SCANIA

Circuit Diagram:
AUS

Drawing No.-
 Sheet-Rev: **2086546-1-23**

N.B. The copyright and ownership of this drawing including associated computer data are and will remain ours. They must not be copied, used or brought to the attention of any third party without prior permission (C) Scania, Sweden