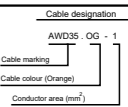
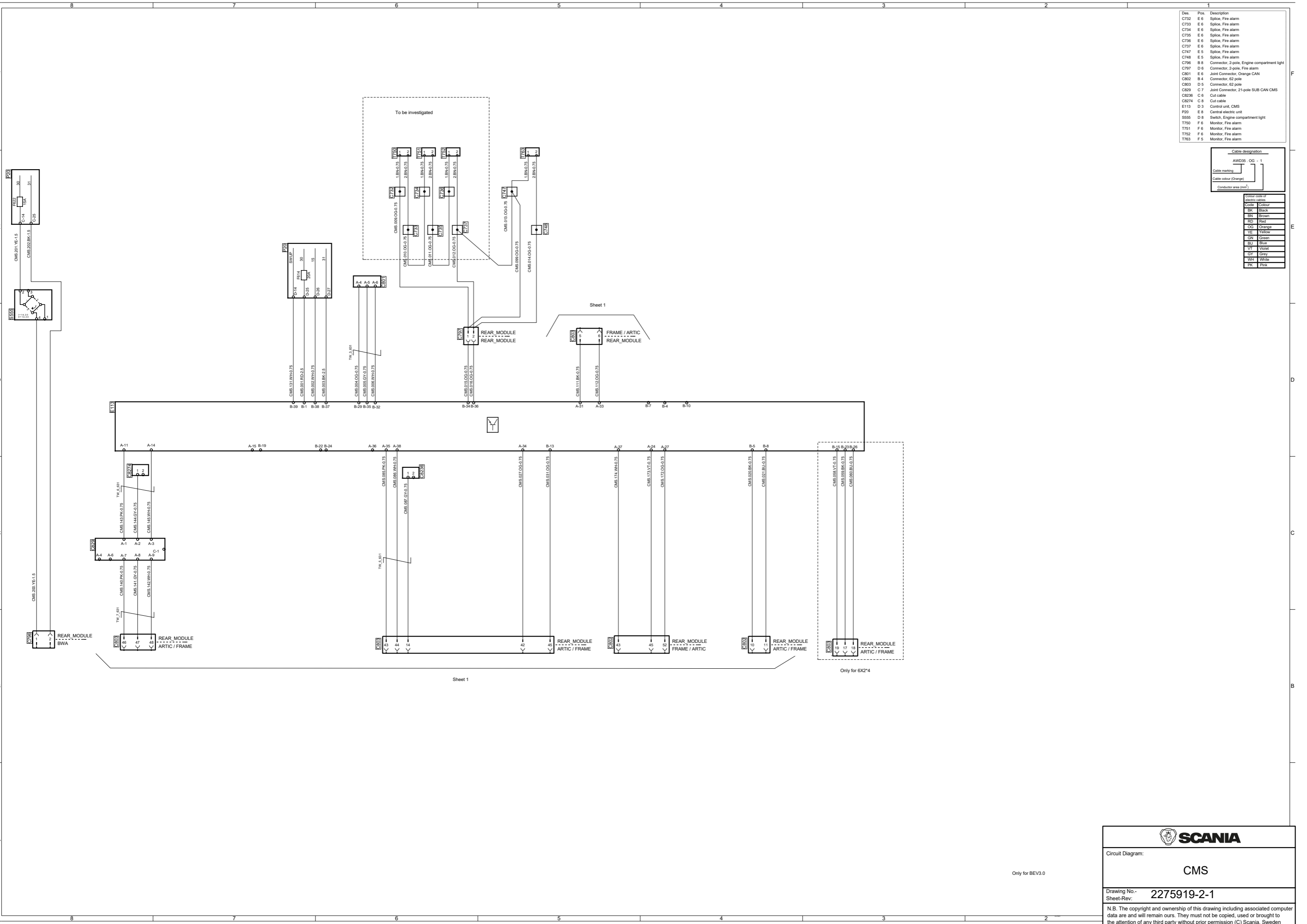


Des.	Pos.	Description
C732	E 6	Splice, Fire alarm
C733	E 6	Splice, Fire alarm
C734	E 6	Splice, Fire alarm
C735	E 6	Splice, Fire alarm
C736	E 6	Splice, Fire alarm
C737	E 6	Splice, Fire alarm
C747	E 5	Splice, Fire alarm
C748	E 5	Splice, Fire alarm
C796	B 8	Connector, 2-pole, Engine compartment light
C797	D 6	Connector, 2-pole, Fire alarm
C801	E 6	Joint Connector, Orange CAN
C802	B 4	Connector, 62 pole
C803	D 5	Connector, 62 pole
C829	C 7	Joint Connector, 21-pole SUB CAN CMS
C8296	C 6	Cut cable
C8294	C 6	Cut cable
E113	D 3	Control unit, CMS
P20	E 8	Central electric unit
S555	D 8	Switch, Engine compartment light
T750	F 6	Monitor, Fire alarm
T751	F 6	Monitor, Fire alarm
T752	F 6	Monitor, Fire alarm
T763	F 5	Monitor, Fire alarm



Code	Colour
SK	Black
BN	Brown
RD	Red
OG	Orange
YE	Yellow
GN	Green
BU	Blue
VT	Violet
GY	Grey
WT	White
PK	Pink



SCANIA

Circuit Diagram:

CMS

Drawing No.-
Sheet-Rev: **2275919-2-1**

N.B. The copyright and ownership of this drawing including associated computer data are and will remain ours. They must not be copied, used or brought to the attention of any third party without prior permission (C) Scania, Sweden

Only for BEV3.0

Only for 6X2*4

Sheet 1

Sheet 1

To be investigated