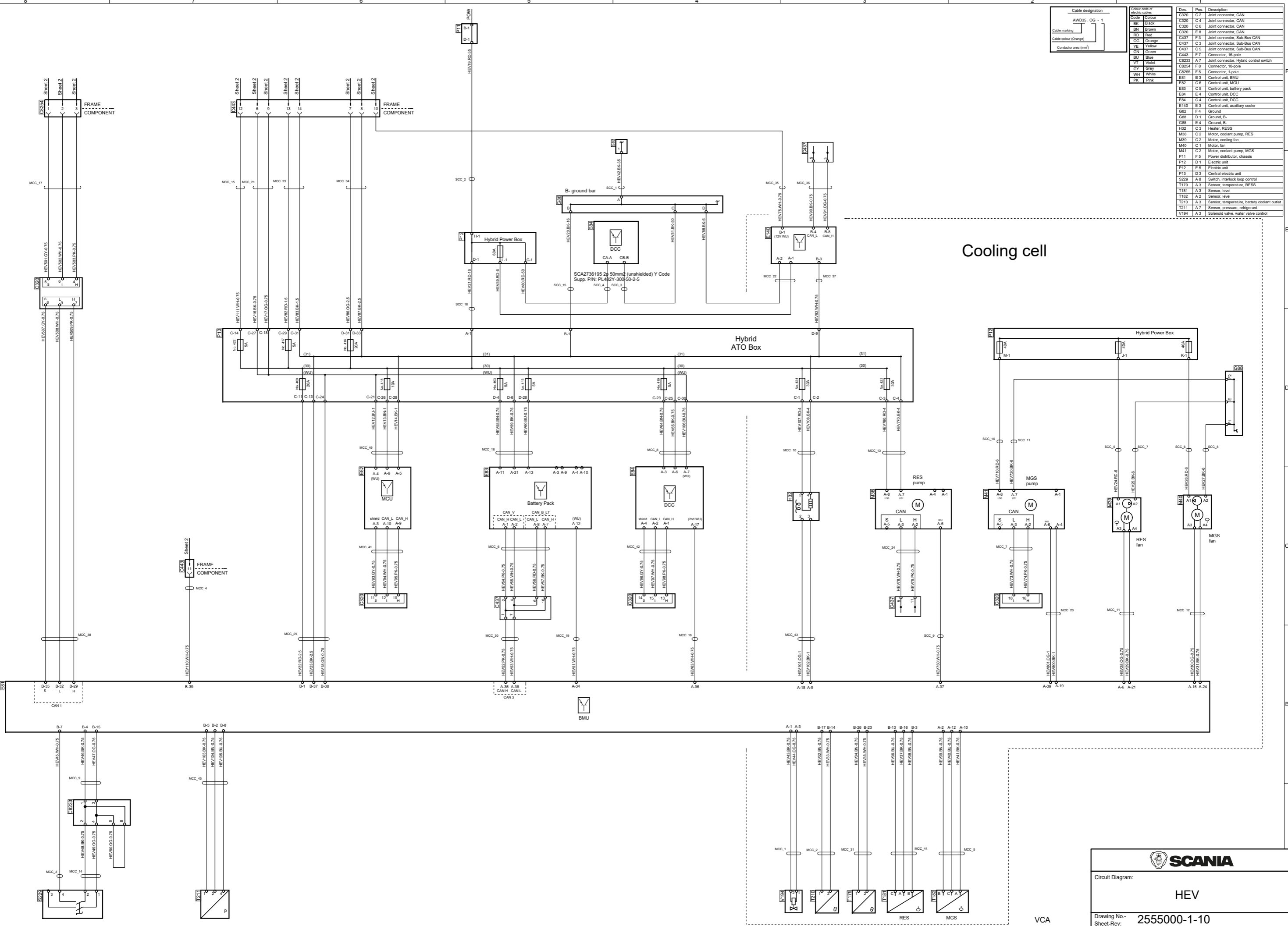



Cable designation		Colour code of electric cables		Des		Pos		Description	
AWD35	OG - 1	Code	Colour	C320	C 2	Joint connector, CAN			
		BK	Black	C320	C 4	Joint connector, CAN			
		BN	Brown	C320	C 6	Joint connector, CAN			
		RD	Red	C320	E 8	Joint connector, CAN			
		OG	Orange	C437	F 3	Joint connector, Sub-Bus CAN			
		YE	Yellow	C437	C 3	Joint connector, Sub-Bus CAN			
		GN	Green	C437	C 5	Joint connector, Sub-Bus CAN			
		WT	White	C443	F 7	Connector, 15-pole			
		GY	Grey	CR233	A 7	Joint connector, Hybrid control switch			
		BU	Blue	CR254	F 8	Connector, 10-pole			
		WH	White	CR256	F 5	Connector, 1-pole			
		PK	Pink	E82	C 6	Control unit, MGU			
				E83	C 5	Control unit, battery pack			
				E84	E 4	Control unit, DCC			
				E84	C 4	Control unit, DCC			
				E140	E 3	Control unit, auxiliary cooler			
				G82	F 4	Ground			
				G88	D 1	Ground, B-			
				G88	E 4	Ground, B-			
				H32	C 3	Heater, RESS			
				M38	C 2	Motor, coolant pump, RES			
				M39	C 2	Motor, cooling fan			
				M40	C 1	Motor, fan			
				M41	C 2	Motor, coolant pump, MGS			
				P11	F 5	Power distributor, chassis			
				P12	D 1	Electric unit			
				PT2	E 5	Electric unit			
				PT3	D 3	Central electric unit			
				S229	A 8	Switch, interlock loop control			
				T179	A 3	Sensor, temperature, RESS			
				T181	A 3	Sensor, level			
				T182	A 2	Sensor, level			
				T210	A 3	Sensor, temperature, battery coolant outlet			
				T211	A 7	Sensor, pressure, refrigerant			
				V194	A 3	Solenoid valve, water valve control			

Cooling cell





SCANIA

Circuit Diagram: **HEV**

Drawing No.: **2555000-1-10**
 Sheet-Rev:

N.B. The copyright and ownership of this drawing including associated computer data are and will remain ours. They must not be copied, used or brought to the attention of any third party without prior permission (C) Scania, Sweden