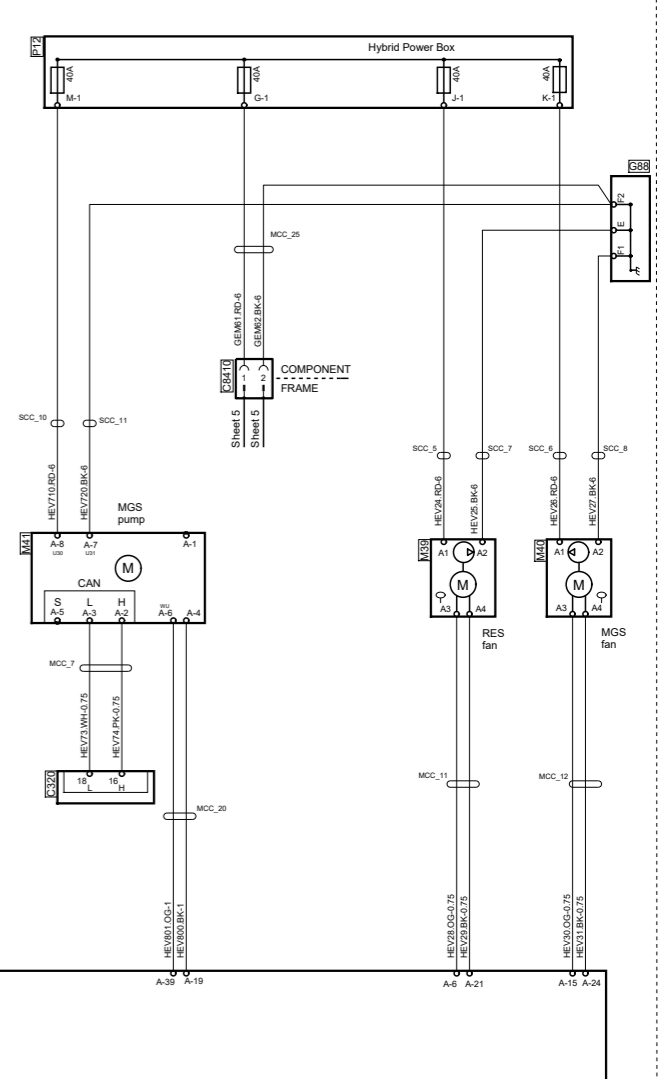


Cable designation		Colour code of electric cables		Des.		Pos.		Description	
AWD35	OG - 1	CO	Colour	C320	C 2	C 2	Joint connector, CAN		
		BK	Black	C320	C 4	C 4	Joint connector, CAN		
		BN	Brown	C320	C 6	C 6	Joint connector, CAN		
		RD	Red	C320	E 6	E 6	Joint connector, CAN		
		OG	Orange	C437	F 3	F 3	Joint connector, Sub-Bus CAN		
		YE	Yellow	C437	C 3	C 3	Joint connector, Sub-Bus CAN		
		GN	Green	C437	C 5	C 5	Joint connector, Sub-Bus CAN		
		BU	Blue	C443	F 7	F 7	Connector, 16-pole		
		MI	Mixte	CR233	A 7	A 7	Joint connector, Hybrid control switch		
		GY	Grey	CR254	F 8	F 8	Connector, 10-pole		
		WH	White	CS410	D 2	D 2	Connector, 2-pole		
		PK	Pink	E81	B 3	B 3	Control unit, BMU		
				E82	C 6	C 6	Control unit, MGU		
				E83	C 5	C 5	Control unit, battery pack, master		
				E84	E 4	E 4	Control unit, DCC		
				E84	C 4	C 4	Control unit, DCC		
				E140	E 3	E 3	Control unit, auxiliary cooler, battery		
				G82	F 4	F 4	Ground		
				O88	D 1	D 1	Ground, B-		
				T38	E 4	E 4	Ground, B-		
				R32	C 3	C 3	Heater, RES		
				M38	C 2	C 2	Motor, coolant pump, RES		
				M39	C 1	C 1	Motor, cooling fan		
				M40	C 1	C 1	Motor, fan		
				M41	C 2	C 2	Motor, coolant pump, MGS		
				P11	F 5	F 5	Power distributor, chassis		
				P12	E 1	E 1	Electric unit		
				T12	E 5	E 5	Electric unit		
				F13	D 3	D 3	Central electric unit		
				S229	A 8	A 8	Switch, interlock loop control		
				T179	A 3	A 3	Sensor, temperature, battery coolant inlet		
				T181	A 3	A 3	Sensor, level		
				T182	A 2	A 2	Sensor, level		
				T210	A 3	A 3	Sensor, temperature, battery coolant outlet		
				T211	A 7	A 7	Sensor, pressure, refrigerant		
				VT194	A 3	A 3	Solenoid valve, water valve control		

### Cooling cell



**SCANIA**

Circuit Diagram: **HEV**

Drawing No.-  
Sheet-Rev: **2555000-1-14**

N.B. The copyright and ownership of this drawing including associated computer data are and will remain ours. They must not be copied, used or brought to the attention of any third party without prior permission (C) Scania, Sweden