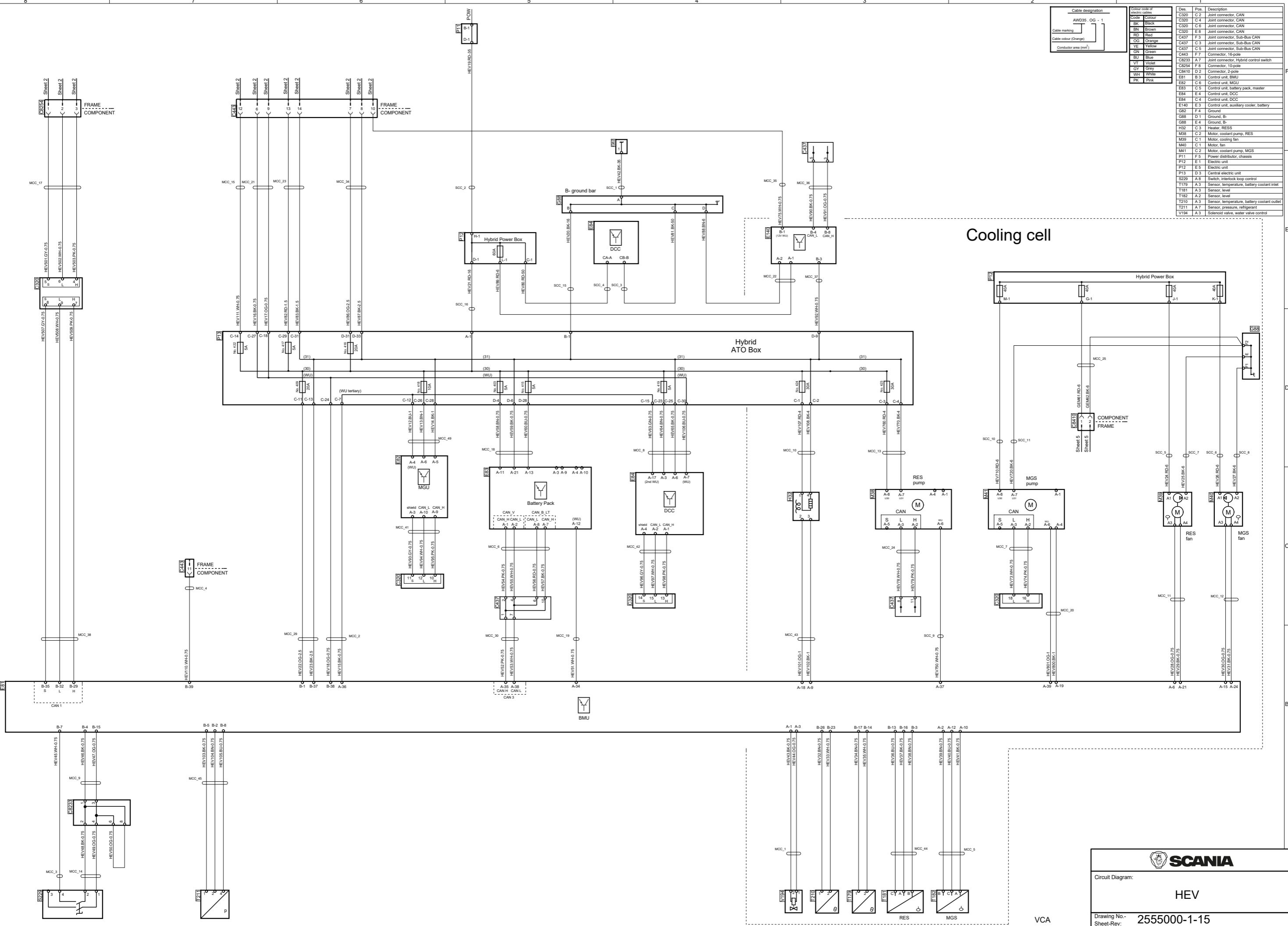


Cable designation		Colour code of electric cables		Des.	Pos.	Description
AWD35	OG - 1	Code	Colour	C320	C 2	Joint connector, CAN
		BN	Black	C320	C 4	Joint connector, CAN
		BR	Brown	C320	E 6	Joint connector, CAN
		RD	Red	C437	F 3	Joint connector, Sub-Bus CAN
		OR	Orange	C437	C 3	Joint connector, Sub-Bus CAN
		YE	Yellow	C437	C 5	Joint connector, Sub-Bus CAN
		GN	Green	C443	F 7	Connector, 16-pole
		BU	Blue	CR233	A 7	Joint connector, Hybrid control switch
		VI	Violet	CR254	F 8	Connector, 10-pole
		WH	White	CR410	D 2	Connector, 2-pole
		GR	Grey	E81	E 3	Control unit, DCC
		PK	Pink	E82	C 6	Control unit, MGU
				E83	C 5	Control unit, battery pack, master
				E84	E 4	Control unit, DCC
				E84	C 4	Control unit, DCC
				E140	E 3	Control unit, auxiliary cooler, battery
				G82	F 4	Ground
				G88	D 1	Ground, B-
				G88	E 4	Ground, B-
				H32	C 3	Heater, RES3
				M38	C 2	Motor, coolant pump, RES
				M39	C 1	Motor, cooling fan
				M40	C 1	Motor, fan
				M41	C 2	Motor, coolant pump, MGS
				P11	F 5	Power distributor, chassis
				P12	E 1	Electric unit
				P12	E 5	Electric unit
				P13	D 3	Central electric unit
				S229	A 8	Switch, interlock loop control
				T179	A 3	Sensor, temperature, battery coolant inlet
				T181	A 3	Sensor, level
				T182	A 2	Sensor, level
				T210	A 3	Sensor, temperature, battery coolant outlet
				T211	A 7	Sensor, pressure, refrigerant
				V194	A 3	Solenoid valve, water valve control

Cooling cell



SCANIA

Circuit Diagram: **HEV**

Drawing No.: **2555000-1-15**

Sheet-Rev:

N.B. The copyright and ownership of this drawing including associated computer data are and will remain ours. They must not be copied, used or brought to the attention of any third party without prior permission (C) Scania, Sweden