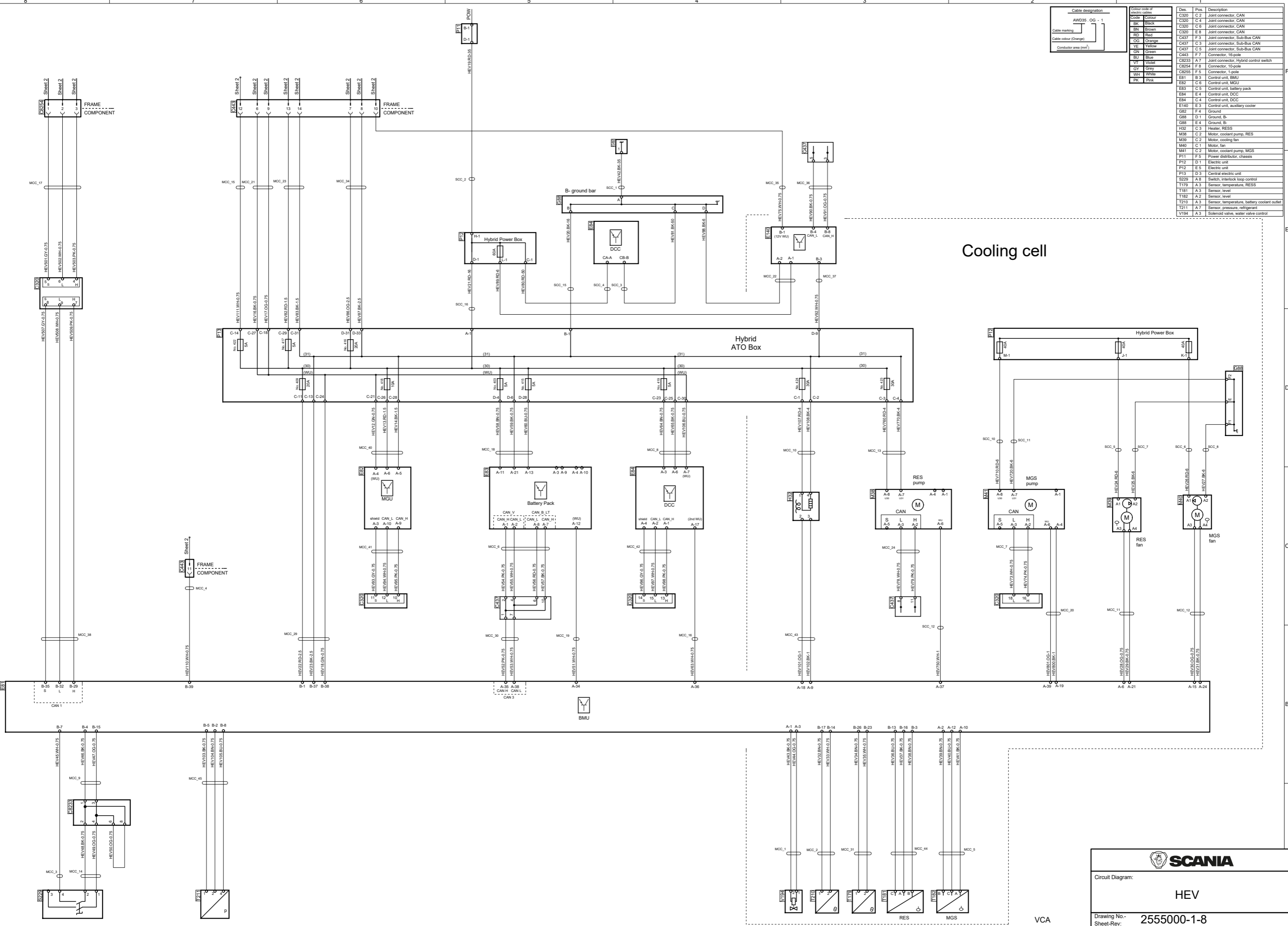


| Cable designation | | Colour code of electric cables | | Des | | Pos | | Description | |
|-------------------|--------|--------------------------------|--------|-------|-----|---|--|-------------|--|
| AWD35 | OG - 1 | Code | Colour | C320 | C 2 | Joint connector, CAN | | | |
| | | BK | Black | C320 | C 4 | Joint connector, CAN | | | |
| | | BN | Brown | C320 | C 6 | Joint connector, CAN | | | |
| | | RD | Red | C320 | E 8 | Joint connector, CAN | | | |
| | | OG | Orange | C437 | F 3 | Joint connector, Sub-Bus CAN | | | |
| | | YE | Yellow | C437 | C 3 | Joint connector, Sub-Bus CAN | | | |
| | | GN | Green | C437 | C 5 | Joint connector, Sub-Bus CAN | | | |
| | | WT | White | C443 | F 7 | Connector, 15-pole | | | |
| | | GY | Grey | C8233 | A 7 | Joint connector, Hybrid control switch | | | |
| | | BU | Blue | C8254 | F 8 | Connector, 10-pole | | | |
| | | WH | White | E82 | C 6 | Control unit, MGU | | | |
| | | PK | Pink | C8255 | F 5 | Connector, 1-pole | | | |
| | | | | E83 | C 5 | Control unit, battery pack | | | |
| | | | | E84 | E 4 | Control unit, DCC | | | |
| | | | | T84 | C 4 | Control unit, DCC | | | |
| | | | | E140 | E 3 | Control unit, auxiliary cooler | | | |
| | | | | G82 | F 4 | Ground | | | |
| | | | | G85 | D 1 | Ground, B- | | | |
| | | | | G88 | E 4 | Ground, B- | | | |
| | | | | H32 | C 3 | Heater, RESS | | | |
| | | | | M38 | C 2 | Motor, coolant pump, RES | | | |
| | | | | M39 | C 2 | Motor, cooling fan | | | |
| | | | | M40 | C 1 | Motor fan | | | |
| | | | | M41 | C 2 | Motor, coolant pump, MGS | | | |
| | | | | P11 | F 5 | Power distributor, chassis | | | |
| | | | | P12 | D 1 | Electric unit | | | |
| | | | | PT2 | E 5 | Electric unit | | | |
| | | | | PT3 | D 3 | Central electric unit | | | |
| | | | | S229 | A 8 | Switch, interlock loop control | | | |
| | | | | T179 | A 3 | Sensor, temperature, RESS | | | |
| | | | | T181 | A 3 | Sensor, level | | | |
| | | | | T182 | A 2 | Sensor, level | | | |
| | | | | T210 | A 3 | Sensor, temperature, battery coolant outlet | | | |
| | | | | T211 | A 7 | Sensor, pressure, refrigerant | | | |
| | | | | V194 | A 3 | Solenoid valve, water valve control | | | |

Cooling cell



SCANIA

Circuit Diagram: **HEV**

Drawing No.-
Sheet-Rev: **2555000-1-8**

N.B. The copyright and ownership of this drawing including associated computer data are and will remain ours. They must not be copied, used or brought to the attention of any third party without prior permission (C) Scania, Sweden