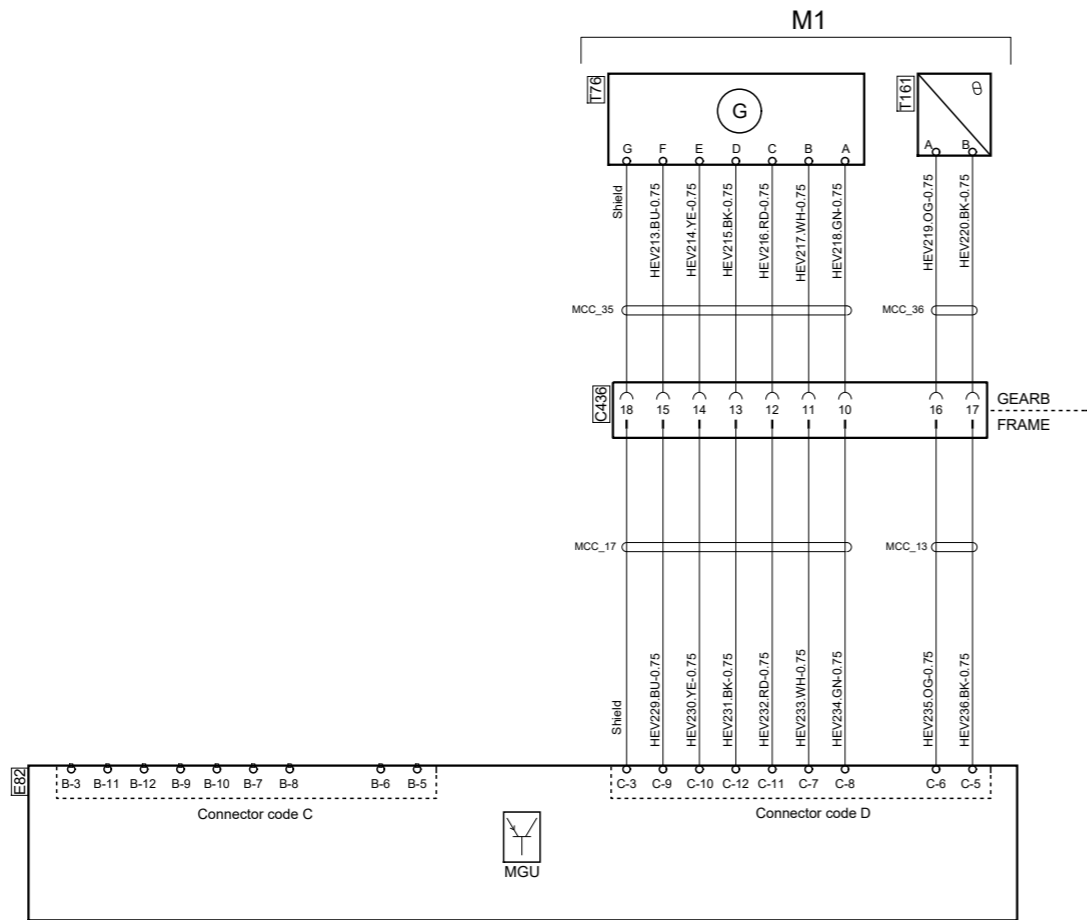
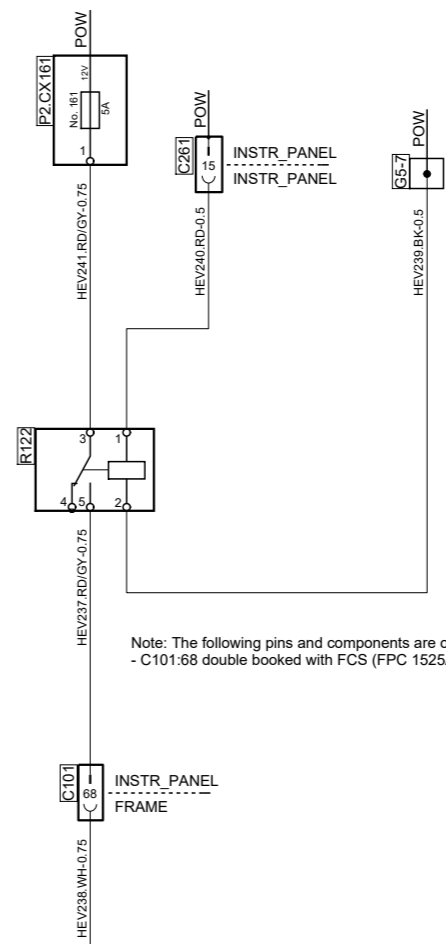


Control Inverter



Note: For P80Gen2, E82.C (Machine2 reference in MGU) will be connected to M1 due to cable harness installation reasons.

Refrigerant Compressor



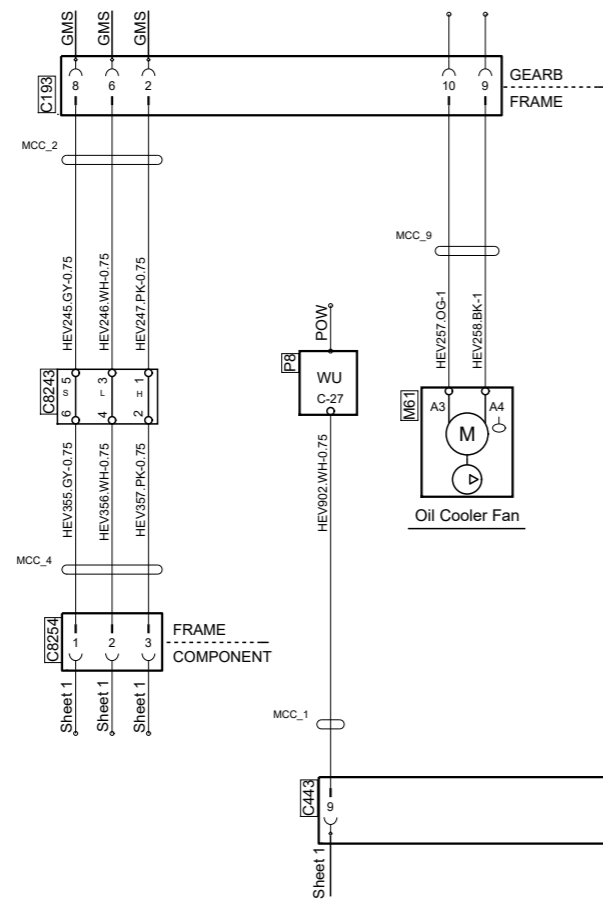
Note: The following pins and components are only for provisional use. - C101.68 double booked with FCS (FPC 1525A/1525B)

Des.	Pos.	Description
C101	D 3	Connector, 72-pole
C193	C 7	Connector, 16-pole
C261	F 3	Connector, 21-pole
C436	E 6	Connector, 18-pole
C443	A 4	Connector, 16-pole
C8243	B 5	Joint connector, HEV
C8243	B 7	Joint connector, HEV
C8254	A 7	Connector, 10-pole
E82	D 5	Control unit, MGU
E142	C 4	Control unit, electrical air compressor
G5-7	F 2	Splice, ground
M61	B 6	Motor, Fan
M61	C 3	Motor, Fan
P2.CX161	F 3	Fuse socket, central electric unit
P8	B 6	Central electric unit, chassis
R122	E 3	Relay, HEV
R123	B 6	Relay, HEV
T76	F 6	Sensor, position
T161	F 5	Sensor, temperature

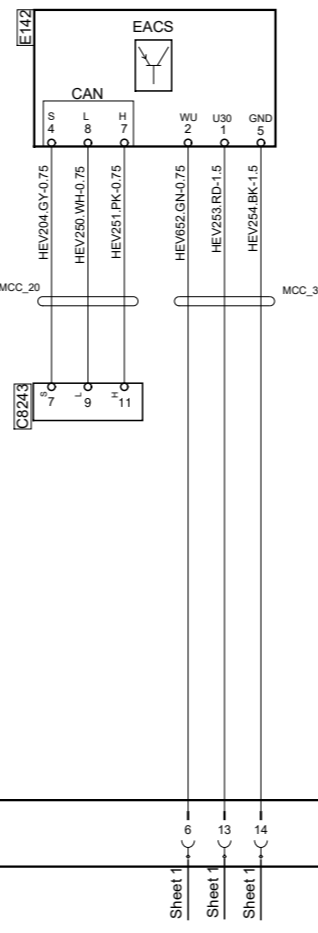
Cable designation	
AWD35 . OG - 1	
Cable marking	
Cable colour (Orange)	
Conductor area (mm ²)	

Colour code of electric cables	
Code	Colour
BK	Black
BN	Brown
RD	Red
OG	Orange
YE	Yellow
GN	Green
BU	Blue
VT	Violet
GY	Grey
WH	White
PK	Pink

Gearbox interface



Electrical Air Compressor (EACS)



Oil Cooler Fan

