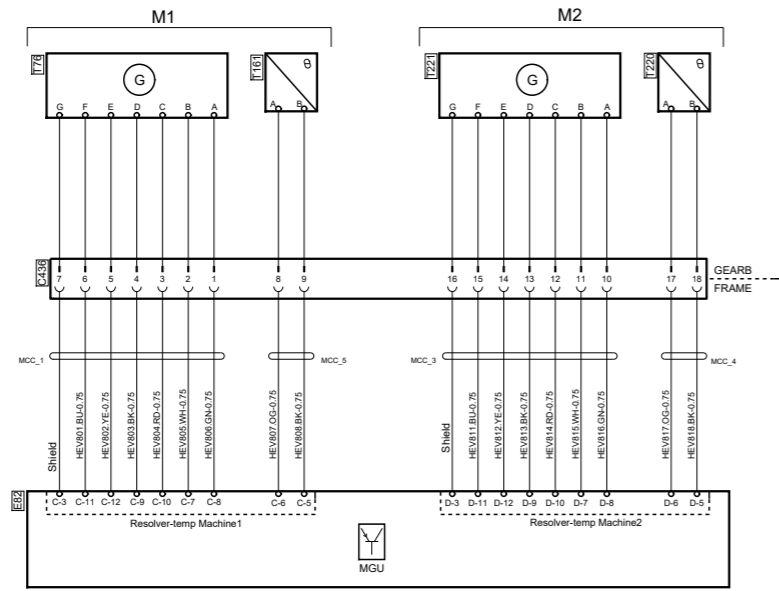
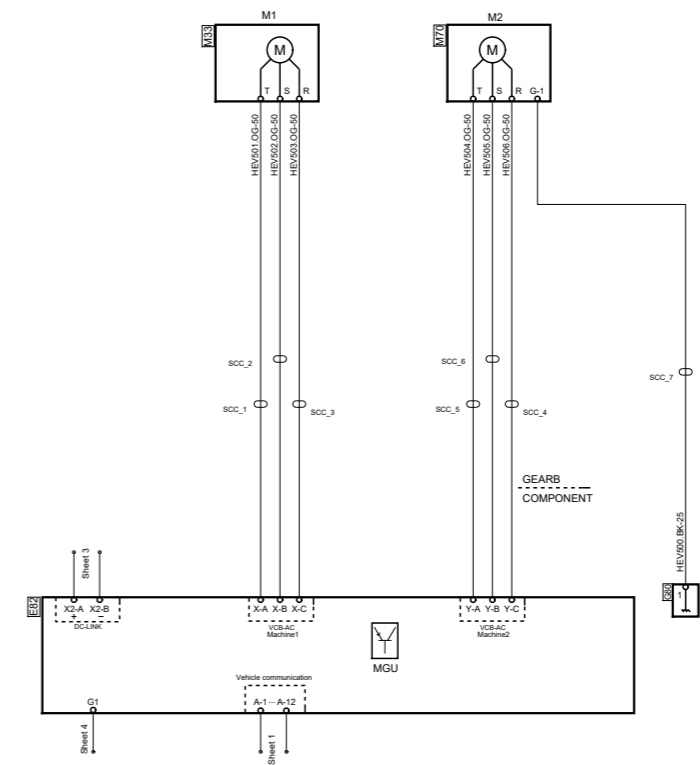


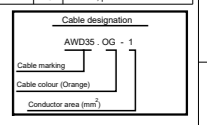
GEM Control Inverter



GEM VCB



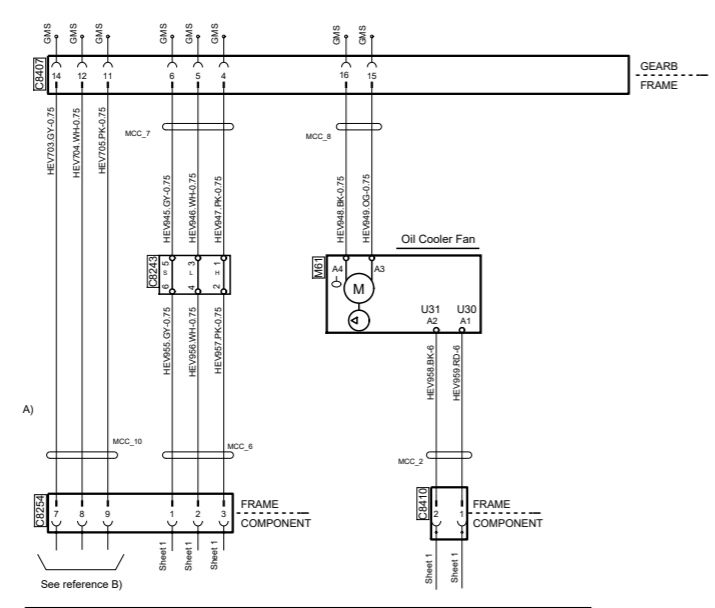
Des.	Pos.	Description
C436	E 7	Connector, 18-pole
C8343	B 7	Joint connector, HEV
C8284	A 7	Connector, 10-pole
C8343	A 3	Joint connector, 12-pole
C8407	B 7	Connector, 18-pole
C8410	A 8	Connector, 2-pole
D77	B 4	Resistor, termination 120 Ohm
E82	B 3	Control unit, MGU
E82	D 2	Control unit, MGU
E82	D 5	Control unit, MGU
G80	D 2	Ground
M33	F 3	Motor, propulsion
M61	B 6	Motor, Fan
M70	F 2	Motor, propulsion
P13	C 3	Central electric unit
T78	E 7	Sensor, position
T220	E 6	Sensor, temperature
T221	E 6	Sensor, position



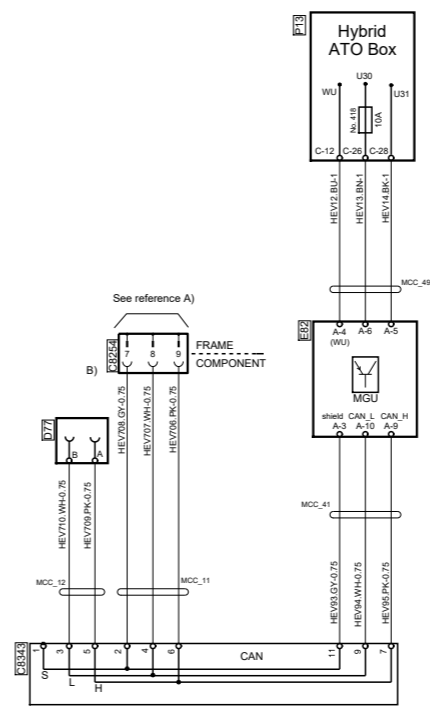
Colour code of electric cables	Code	Color
BN	Brown	
RD	Red	
OR	Orange	
YE	Yellow	
GN	Green	
BL	Blue	
WT	White	
GR	Grey	
WH	White	
PK	Pink	

GEM Frame Harness Design

Gearbox interface



GEM HPU Harness Design



Circuit Diagram:
HEV

Drawing No.-
Sheet-Rev: **2555000-5-7**

GEM FUNCTIONALITY

N.B. The copyright and ownership of this drawing including associated computer data are and will remain ours. They must not be copied, used or brought to the attention of any third party without prior permission (C) Scania, Sweden