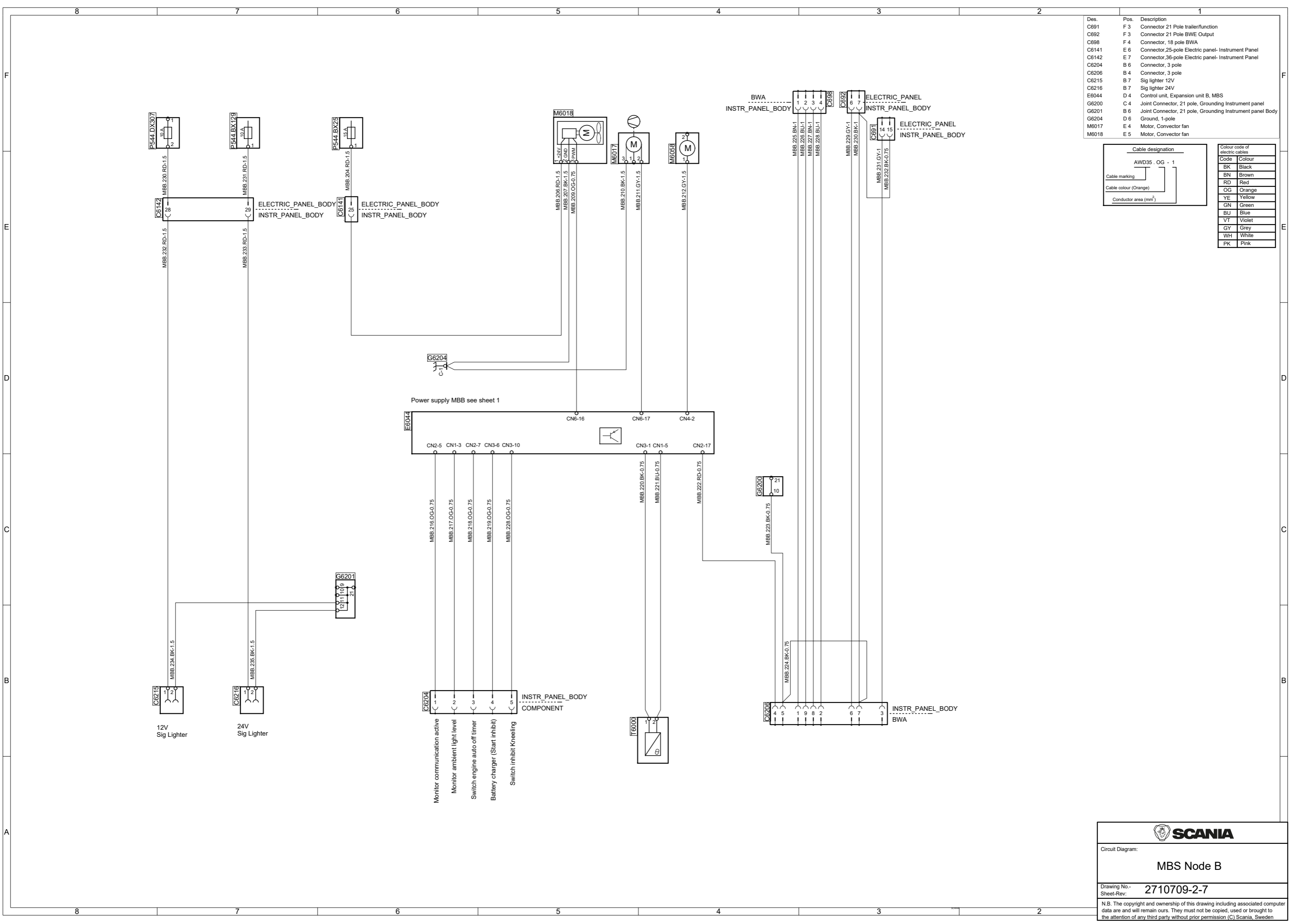


Des.	Pos.	Description
C691	F3	Connector 21 Pole trailer/function
C692	F3	Connector 21 Pole BWE Output
C698	F4	Connector, 18 pole BWA
C6141	E6	Connector,25-pole Electric panel- Instrument Panel
C6142	E7	Connector,36-pole Electric panel- Instrument Panel
C6204	B6	Connector, 3 pole
C6206	B4	Connector, 3 pole
C6215	B7	Sig lighter 12V
C6216	B7	Sig lighter 24V
E6044	D4	Control unit, Expansion unit B, MBS
G6200	C4	Joint Connector, 21 pole, Grounding Instrument panel
G6201	B6	Joint Connector, 21 pole, Grounding Instrument panel Body
G6204	D6	Ground, 1-pole
M6017	E4	Motor, Convector fan
M6018	E5	Motor, Convector fan

Cable designation		Colour code of electric cables	
AWD35 - OG - 1		Code	Colour
Cable marking		BK	Black
Cable colour (Orange)		BN	Brown
Conductor area (mm ²)		RD	Red
		OG	Orange
		YE	Yellow
		GN	Green
		BU	Blue
		VT	Violet
		GY	Grey
		WH	White
		PK	Pink



SCANIA

Circuit Diagram:

MBS Node B

Drawing No.- **2710709-2-7**
Sheet-Rev:

N.B. The copyright and ownership of this drawing including associated computer data are and will remain ours. They must not be copied, used or brought to the attention of any third party without prior permission (C) Scania, Sweden