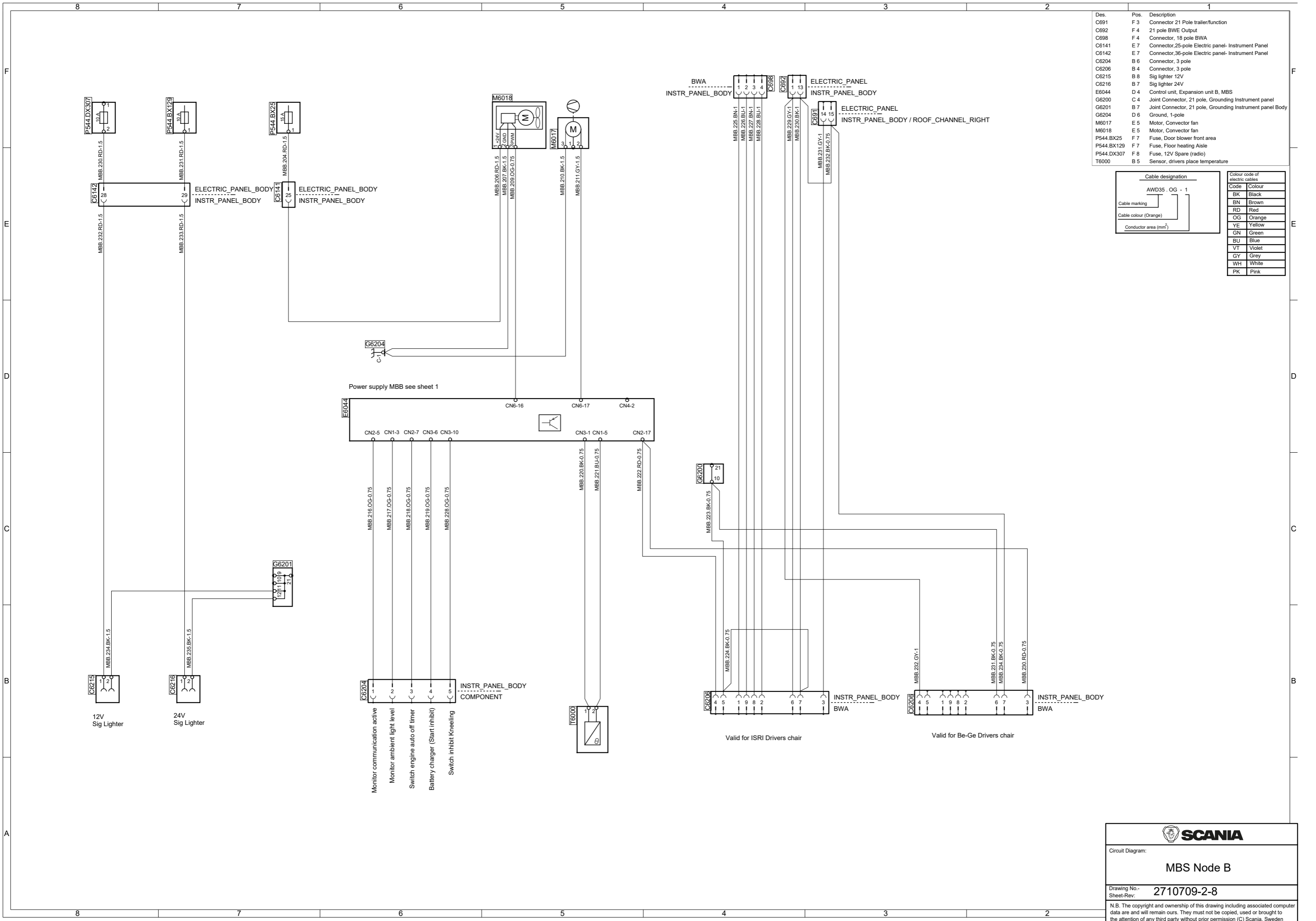


Des.	Pos.	Description
C691	F 3	Connector 21 Pole trailer/function
C692	F 4	21 pole BWE Output
C698	F 4	Connector, 18 pole BWA
C6141	E 7	Connector, 25-pole Electric panel- Instrument Panel
C6142	E 7	Connector, 36-pole Electric panel- Instrument Panel
C6204	B 6	Connector, 3 pole
C6206	B 4	Connector, 3 pole
C6215	B 8	Sig lighter 12V
C6216	B 7	Sig lighter 24V
E6044	D 4	Control unit, Expansion unit B, MBS
G6200	C 4	Joint Connector, 21 pole, Grounding Instrument panel
G6201	B 7	Joint Connector, 21 pole, Grounding Instrument panel Body
G6204	D 6	Ground, 1-pole
M6017	E 5	Motor, Convactor fan
M6018	E 5	Motor, Convactor fan
P544.BX25	F 7	Fuse, Door blower front area
P544.BX129	F 7	Fuse, Floor heating Aisle
P544.DX307	F 8	Fuse, 12V Spare (radio)
T6000	B 5	Sensor, drivers place temperature

Cable designation		Colour code of electric cables	
AWD35 . OG - 1		Code	Colour
Cable marking		BK	Black
Cable colour (Orange)		BN	Brown
Conductor area (mm ²)		RD	Red
		OG	Orange
		YE	Yellow
		GN	Green
		BU	Blue
		VT	Violet
		GY	Grey
		WH	White
		PK	Pink



SCANIA

Circuit Diagram:

MBS Node B

Drawing No.- 2710709-2-8
Sheet-Rev:

N.B. The copyright and ownership of this drawing including associated computer data are and will remain ours. They must not be copied, used or brought to the attention of any third party without prior permission (C) Scania, Sweden