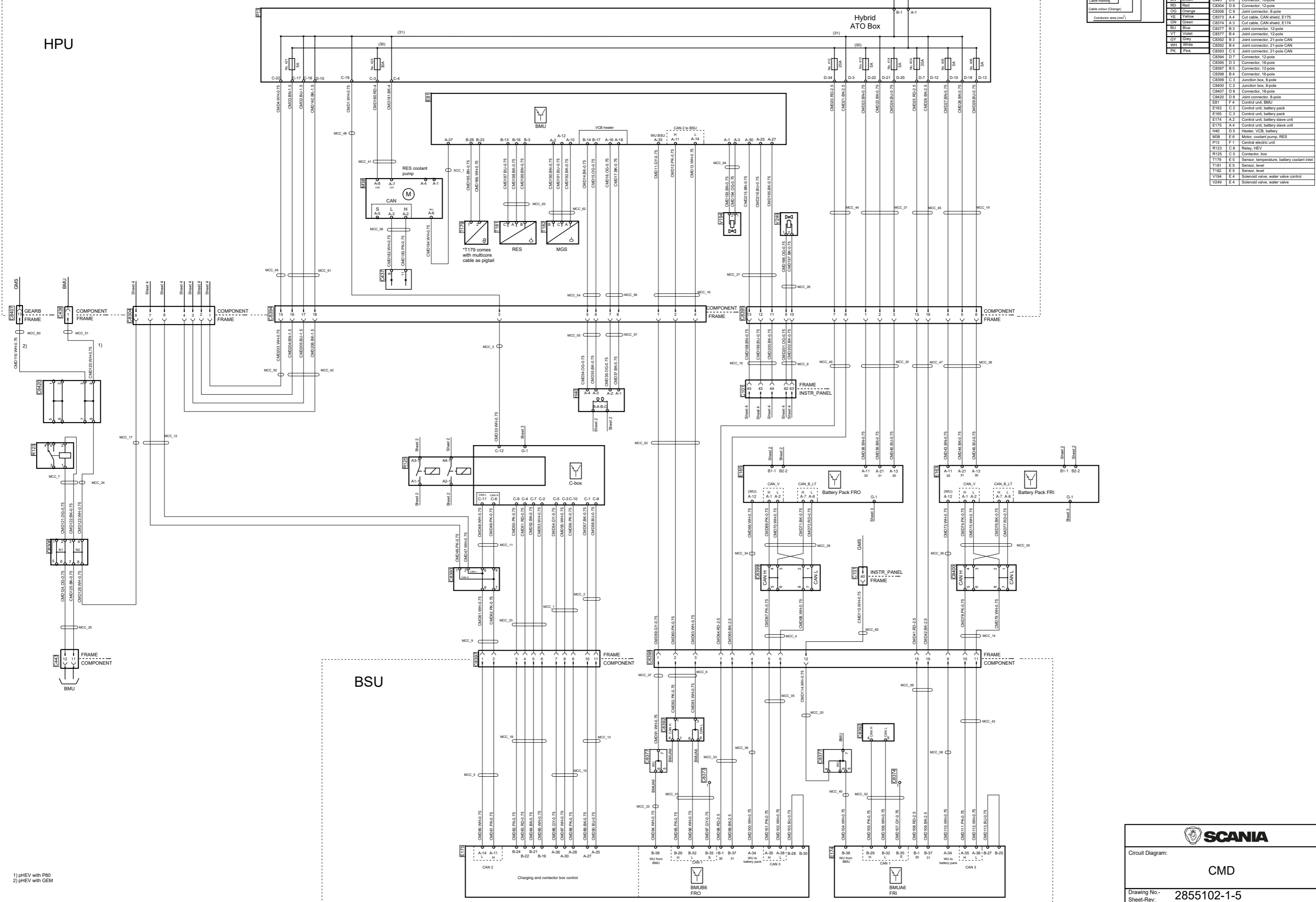


HPU

Hybrid ATO Box

BSU

Colour code of electric wires	Des.	Pos.	Description
AWD35	D 8		Connector, 16-pole
BK	E 6		Joint connector, Sub-Bus CAN
BN	B 8		Connector, 16-pole
RD	D 8		Connector, 12-pole
OG	C 8		Joint connector, 8-pole
YE	A 4		Cut cable, CAN shield, E175
GN	A 3		Cut cable, CAN shield, E174
BU	B 3		Joint connector, 12-pole
VT	B 4		Joint connector, 12-pole
GY	B 3		Joint connector, 21-pole CAN
WH	B 4		Joint connector, 21-pole CAN
PK	C 5		Joint connector, 21-pole CAN
	D 7		Connector, 12-pole
	D 3		Connector, 16-pole
	B 5		Connector, 12-pole
	B 4		Connector, 16-pole
	C 3		Junction box, 8-pole
	C 2		Junction box, 8-pole
	D 8		Connector, 18-pole
	D 8		Joint connector, 8-pole
	F 4		Control unit, BMU
	C 2		Control unit, battery pack
	C 3		Control unit, battery pack
	A 2		Control unit, battery slave unit
	A 4		Control unit, battery slave unit
	D 5		Heater, VCB, battery
	E 6		Motor, coolant pump, RES
	F 1		Central electric unit
	C 8		Relay, HEV
	C 5		Connector, box
	E 5		Sensor, temperature, battery coolant inlet
	E 5		Sensor, level
	E 5		Sensor, level
	E 4		Solenoid valve, water valve control
	E 4		Solenoid valve, water valve



1) pHEV with P80
 2) pHEV with GEM

SCANIA

Circuit Diagram: **CMD**

Drawing No.-
Sheet-Rev: **2855102-1-5**

N.B. The copyright and ownership of this drawing including associated computer data are and will remain ours. They must not be copied, used or brought to the attention of any third party without prior permission (C) Scania, Sweden