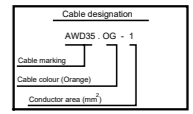


Des	Pos	Description
C621	B 4	Connector, 36-pole
C722	C 8	Joint connector, Orange CAN
C730	E 4	Splice, Switchbox
C732	F 7	Splice, Fire alarm
C733	F 7	Splice, Fire alarm
C734	F 7	Splice, Fire alarm
C735	F 7	Splice, Fire alarm
C736	F 7	Splice, Fire alarm
C737	F 7	Splice, Fire alarm
C747	F 6	Splice, Fire alarm
C748	F 6	Splice, Fire alarm
C786	D 4	Connector, 2-pole, Engine compartment light
C797	E 7	Connector, 2-pole, Fire alarm
C803	D 3	Connector, 82 pole
E113	B 4	Control unit, CMS
G504	A 4	Ground, Join connector 21-Pole Electric Panel
P2 BX73	A 3	Fuse socket, central electric unit
T8	E 7	Central electric unit, chassis
S863	E 4	Switchbox, Engine compartment
T16	C 6	Sensor, fuel level
T563	E 5	Sensor/Monitor, low brake pressure third axle
T750	F 7	Monitor, Fire alarm
T751	F 7	Monitor, Fire alarm
T752	F 7	Monitor, Fire alarm
T763	F 6	Monitor, Fire alarm



Colour code of electric cables

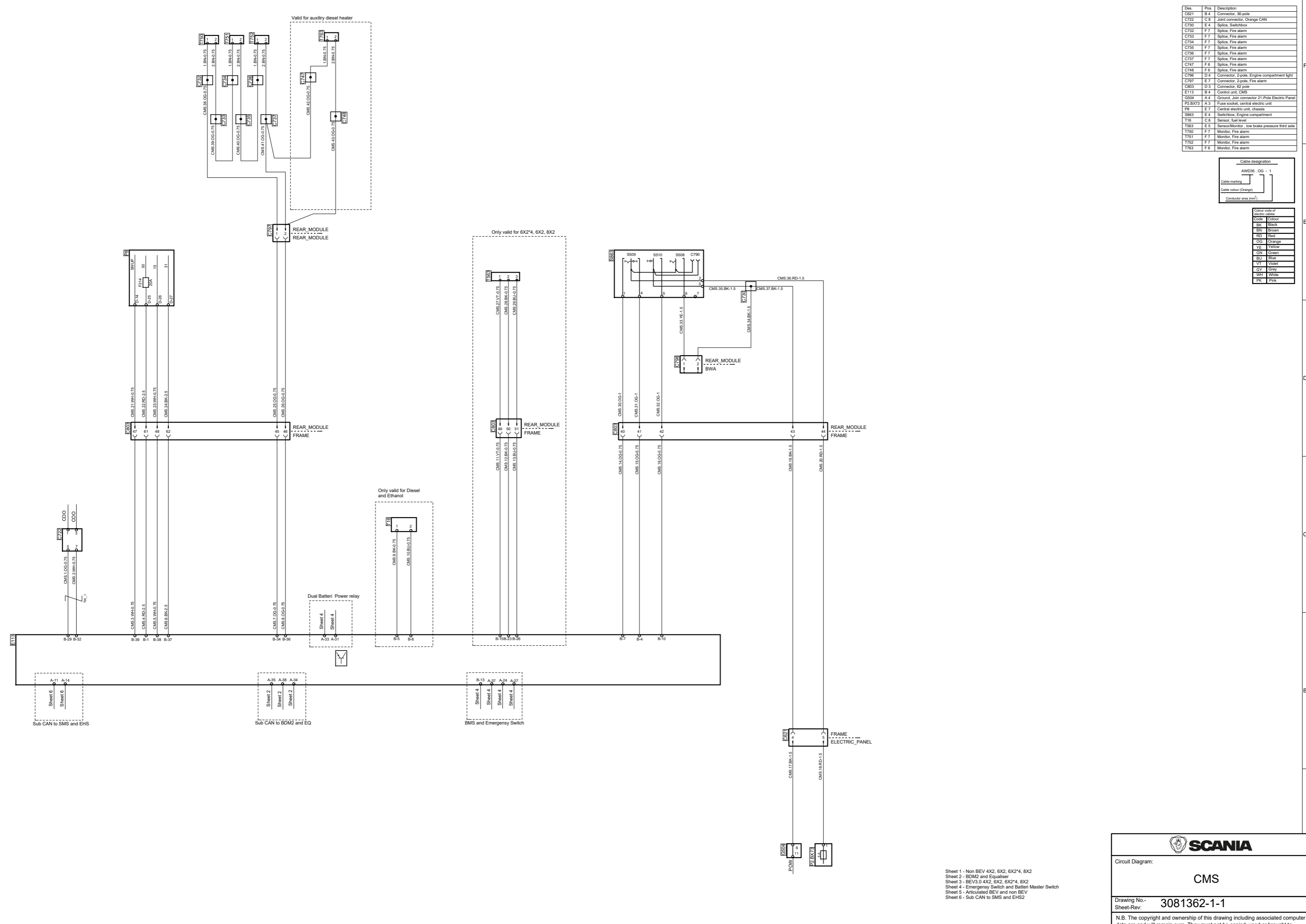
Code	Colour
BK	Black
BN	Brown
RD	Red
OG	Orange
YE	Yellow
GN	Green
BL	Blue
VI	Violet
GY	Grey
WH	White
PK	Pink

Valid for auxiliary diesel heater

Only valid for 6X2\*4, 6X2, 8X2

Only valid for Diesel and Ethanol

Dual Battery Power relay



Sheet 1 - Non BEV 4X2, 6X2, 6X2\*4, 8X2  
 Sheet 2 - BDM2 and Equaliser  
 Sheet 3 - BEV3.0 4X2, 6X2, 6X2\*4, 8X2  
 Sheet 4 - Emergency Switch and Battery Master Switch  
 Sheet 5 - Articulated BEV and non BEV  
 Sheet 6 - Sub CAN to SMS and EHS2

**SCANIA**

Circuit Diagram: **CMS**

Drawing No.- Sheet-Rev: **3081362-1-1**

N.B. The copyright and ownership of this drawing including associated computer data are and will remain ours. They must not be copied, used or brought to the attention of any third party without prior permission (C) Scania, Sweden