

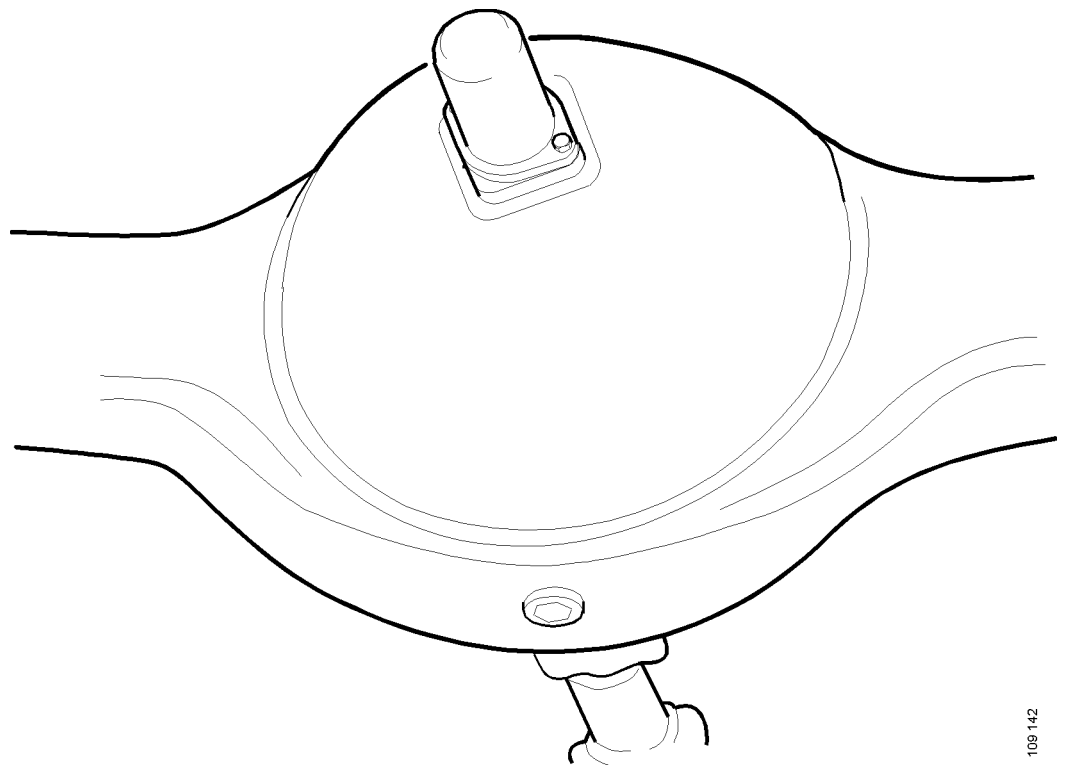
SCANIA

08:00-01

Issue 2 en

Filtering of oil in rear axles with oil filter in the axle housing

Function and work description



109 142

General

The service life of the central gear is often limited due to wear damage caused by small, hard particles in the lubrication oil. Filtering of the oil increases the service life of the central gear and the hub reduction gear, in cases where the oil is common, by cleaning the oil from these particles.

Cleanliness is extremely important when working with central gears and hub reduction gears. Contamination reduces the service life considerably.

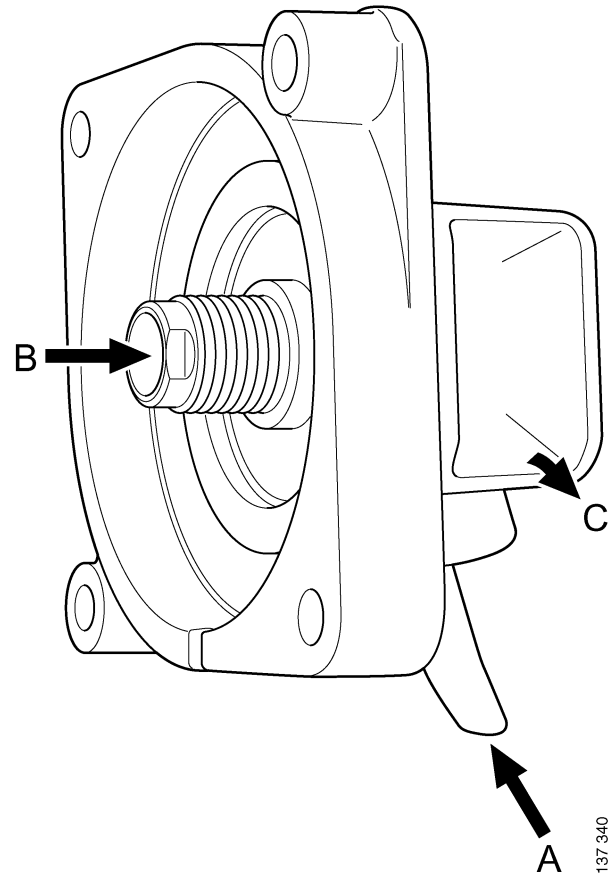
Function description

The oil filter is threaded into the oil collector, which is located on the rear part of the rear axle housing.

The oil flow is depending on the horizontal and vertical position of the inlet, in relation to the crown wheel and the oil level.

When the crown wheel rotates, the oil is forced towards the inlet to the filter where the oil is filtered. The filter outlet is angled to one side, thus preventing the filtered oil to re-enter into the filter.

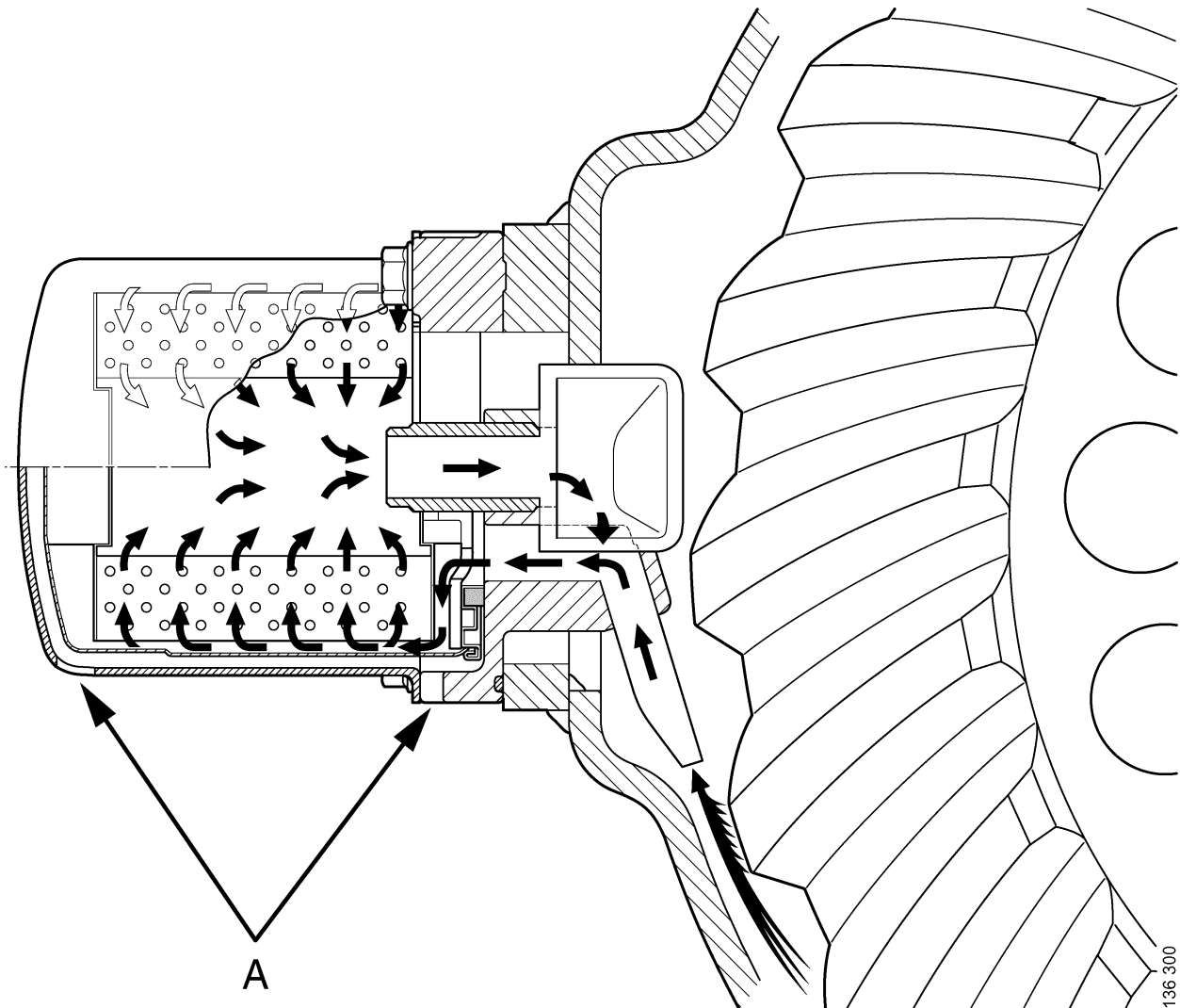
Some vehicles are equipped with a ventilated cover over the oil filter, in order to protect from dirt and impact.



A Intake to filter
B Outlet from filter
C Outlet, filtered oil

137 940

Oil flow

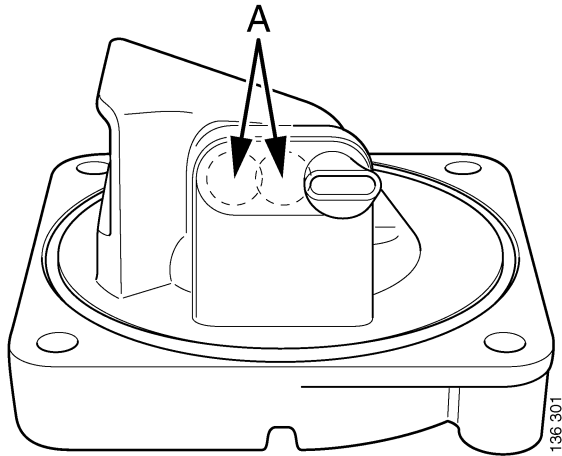


136 300

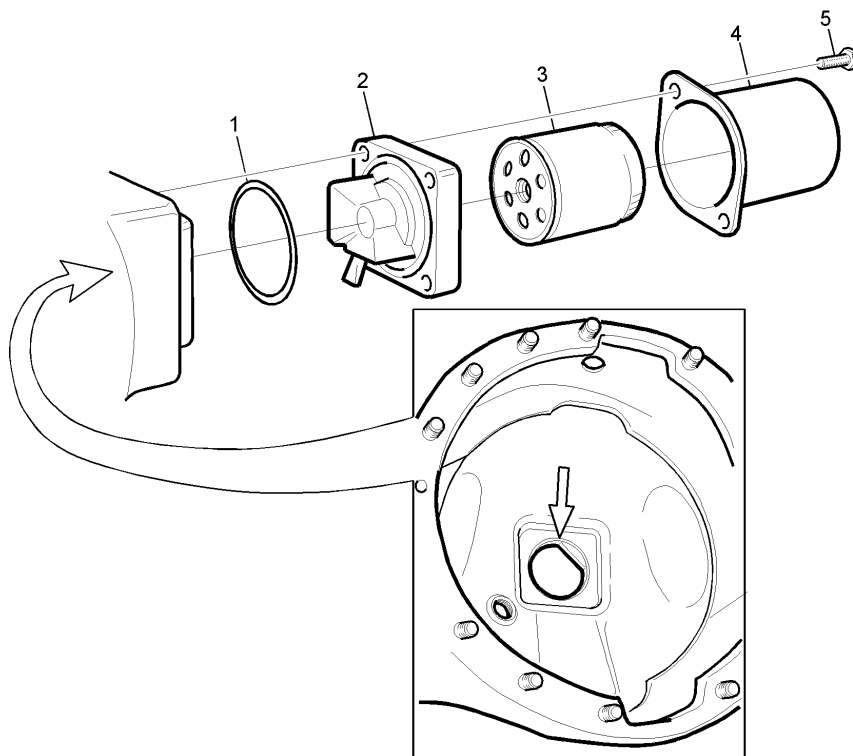
A Drain holes

Work description

IMPORTANT! In order to obtain satisfactory oil filtering it is important that the correct type of oil collector, designed for the vehicle's central gear type and gear ratio, is used. If the central gear ratio is changed, it may therefore also be necessary to change the oil collector.



A = Alternative filter inlet locations, depending on central gear type and gear ratio



- 1 O-ring
- 2 Oil collector
- 3 Oil filter
- 4 Ventilated cover
- 5 Flange bolt

