

SCANIA

05:00-03

Issue 2 **en**

Damper for range gear changing

GR801/900, GRS890/900

Work Description

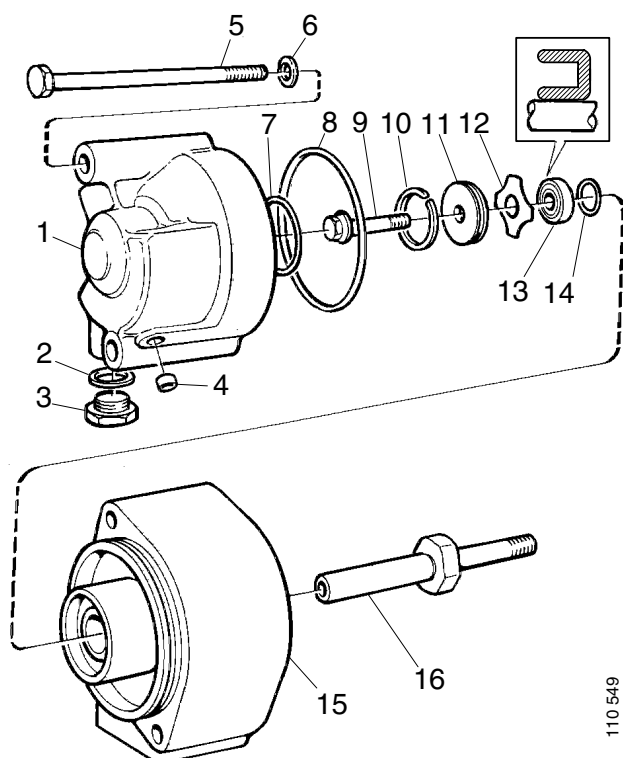
Contents

Damper for range gear changing	General.....	3
	Fitting the damper.....	4

Damper for range gear changing

General

A hydraulic damper has been developed to reduce the noise arising when changing from high to low range. The damper is designed for retrofitting.



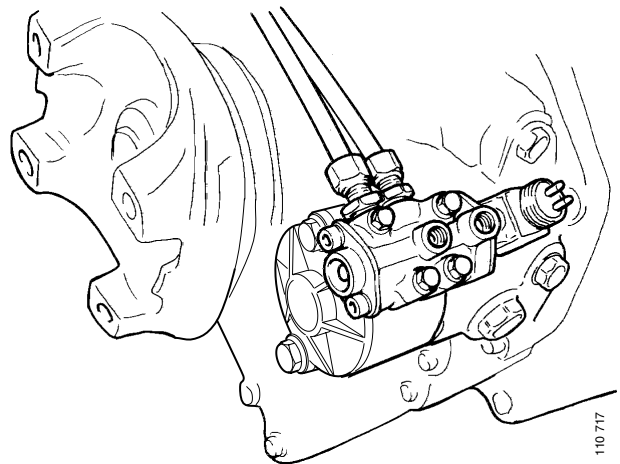
110 549

Damper

- | | |
|---|--|
| 1 Housing | 9 Flange screw |
| 2 Copper gasket | 10 Piston ring |
| 3 Plug | 11 Piston |
| 4 Core plug (pre-fitted in the housing) | 12 Washer |
| 5 Bolt | 13 Seal (pre-fitted in the cylinder) |
| 6 Washer | 14 O-ring (pre-fitted in the cylinder) |
| 7 O-ring (pre-fitted in the housing) | 15 Cylinder |
| 8 O-ring (pre-fitted in the cylinder) | 16 Shaft |

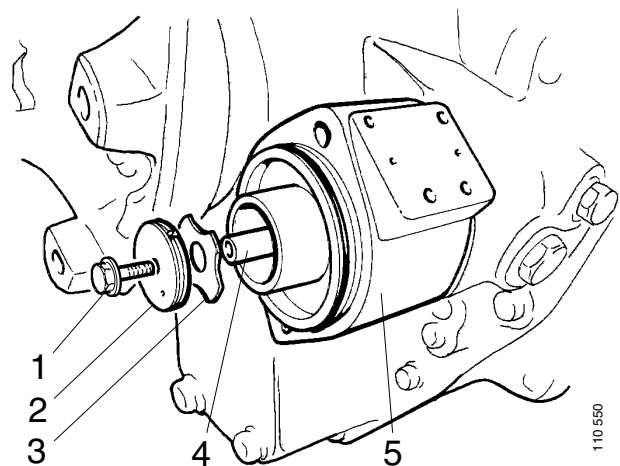
Fitting the damper

- 1 Detach the control valve from the cylinder.
- 2 Remove the cylinder and the piston-retaining bolt.



Cylinder and control valve

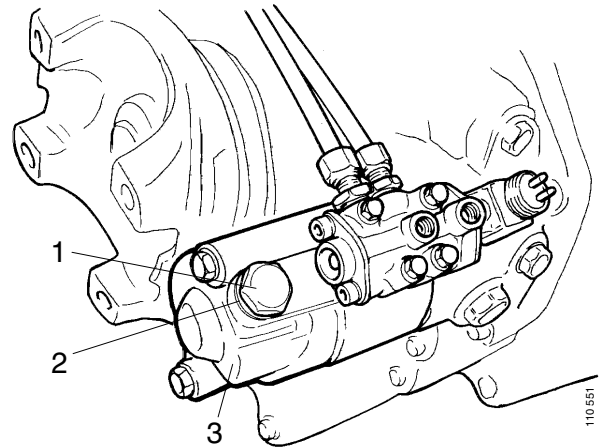
- 3 Fit the shaft. Tightening torque 25 Nm.
 - 4 Coat the new cylinder with grease 319 308 and fit it in place.
 - 5 Fit the washer.
-
- 6 Fit the piston and piston ring and screw them in place with the flange screw. Tightening torque 10 Nm.
 - 7 Lubricate the O-rings in the housing with ATF oil. Fit the housing and bolt it in place.



- 1 *Flange screw*
- 2 *Piston with piston ring*
- 3 *Washer*
- 4 *Shaft*
- 5 *Cylinder*

Note: Take care to avoid damaging the piston ring when fitting the housing.

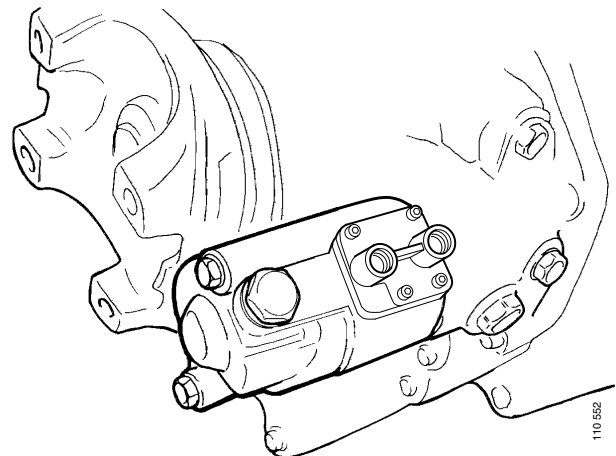
- 8 Top up with ATF oil until full, about 1 dl.
- 9 Fit the plug and copper gasket.
- 10 Fit the control valve back in place.



- 1 Plug
- 2 Copper gasket
- 3 Housing

For gearboxes with CS and Opticruise:

- 1 Gearboxes with CS and Opticruise have no control valve. Fit a cover as shown in the illustration. Seal the connections with 2 O-rings, which should be fitted on the inside of the cover.



CS and Opticruise

