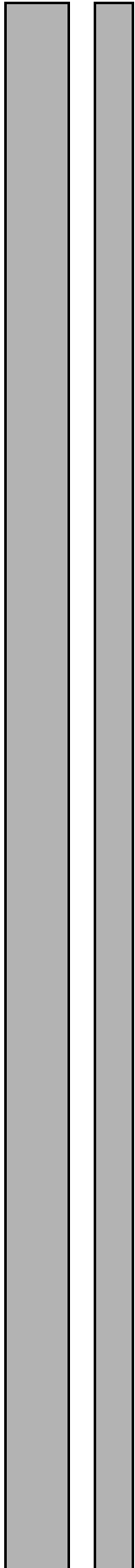


**SCANIA**

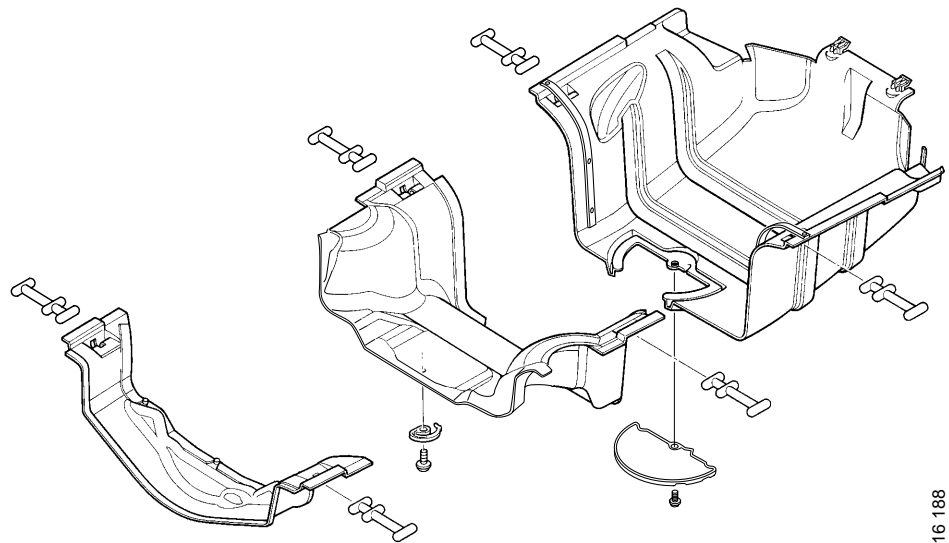
**18:01-14**

Issue 01 en



## Noise shields

### Work Description



116 188

---

# Contents

Shield under the engine	.....	3
Shield under the gearbox	.....	4
Shields on the frame	.....	5

## Shield under the engine

The noise shield located under the engine consists of three sections, and is secured to the frame with rubber straps.

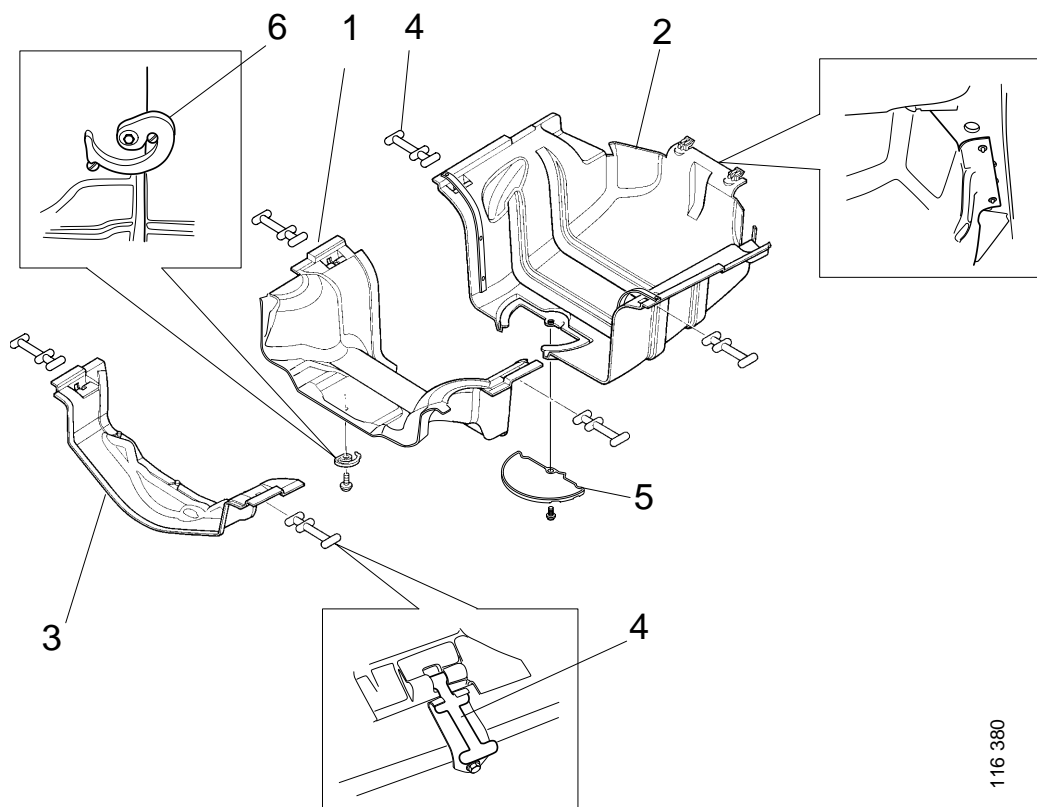
### Removal and fitting

#### Removal

- 1 On vehicles with a leaf spring suspended front axle: Remove the shield in two sections, the two rear sections can remain together.
- 2 On vehicles with an air suspended front axle: Remove the shield in three sections. Fill the bellows with air in order to obtain better access.

#### Fitting

- 1 Position shield 1 against the lower edge of the frame and fit the rubber straps.
- 2 Locate the fingers of the forward edge on shield 2 in the holes of the front crossmember by tilting the shield.
- 3 Compress the sides of the shield and position them on the lower edge of the frame.
- 4 Fit the rubber straps.
- 5 Secure with oil plug cover 5.
- 6 Position shield 3 against the lower edge of the frame and fit the rubber straps.
- 7 Secure with knob 6.



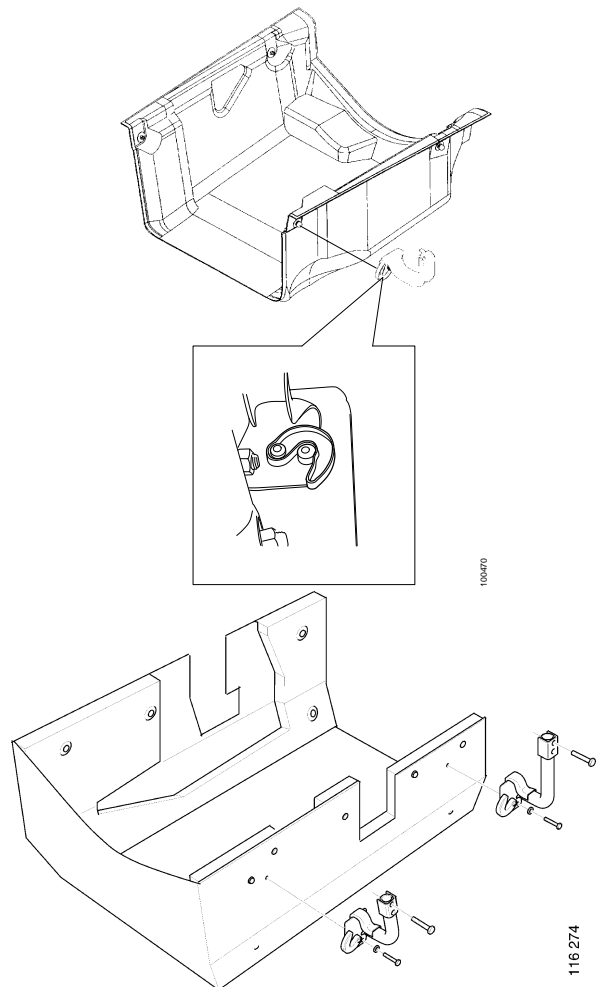
*The enlarged illustrations show the view from underneath.*

## Shield under the gearbox

The noise shield under the gearbox is available in three different versions, of which two are attached using hooks. The third version is attached using bolts and consists of four sections held together using quick release screws.

### Removal and fitting of shields with hooks

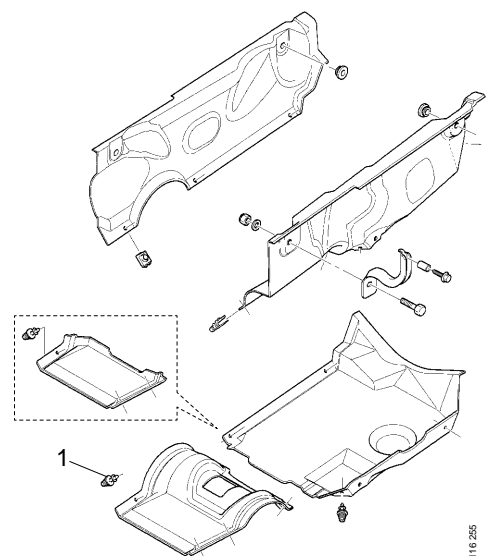
- 1 Loosen the hooks and remove the noise shield by compressing the sides and pulling it rearwards and downwards.
- 2 Push the noise shield from the rear and forwards. Secure by turning the hooks.



*Shields secured using hooks*

### Removal and fitting of shield secured with bolts

- 1 Remove the quick release screws 1 and remove the lower sections of the shield. Unscrew the sides from the brackets.
- 2 First screw the side sections in place, then fit the lower sections using the quick release screws 1.



*Shield secured using bolts*

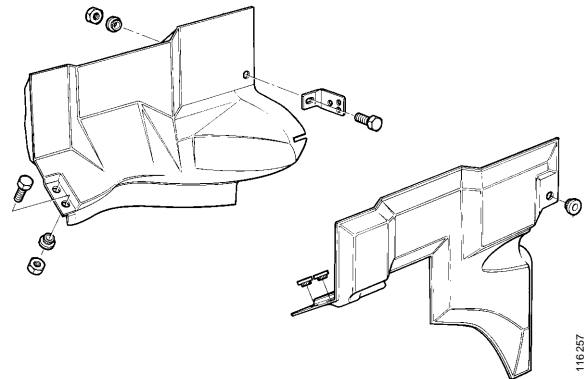
## Shields on the frame

The noise shields on the frame are located by the engine, between the frame and the cab. The shields are bolted in place using brackets fitted to the frame.

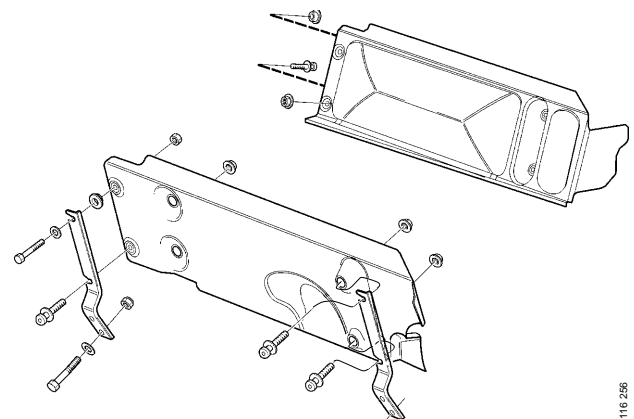
There are two versions, one for R cabs and one for T cabs.

### Removal and fitting of shields on the frame

- 1 Remove the shields by unscrewing them from the brackets.
- 2 Locate the shields and screw them onto the brackets.



*Shields for R cab*



*Shields for T cab*