

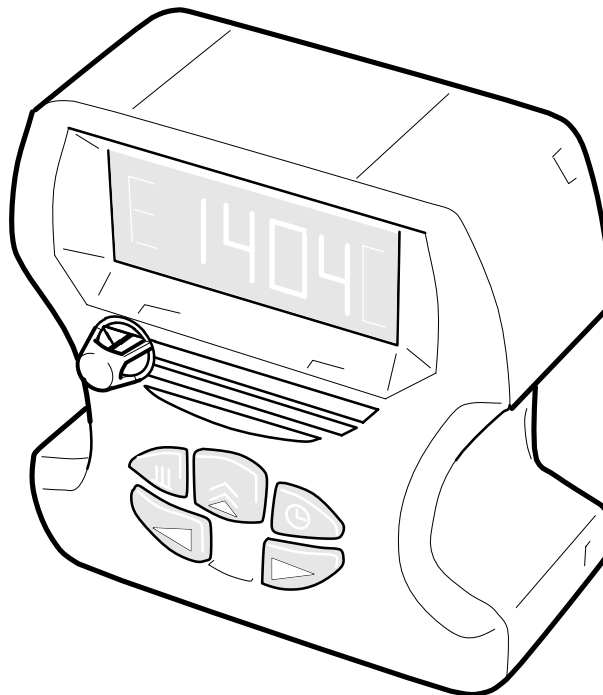
SCANIA

19:04-10

Issue 1 en

Operation unit for Webasto and Eberspächer

Work description, service fitting



Contents

| | |
|-------------------------------|---|
| General | 3 |
| Operation unit - Fitting | |
| Vehicles with closet | 3 |
| Vehicles without closet | 5 |
| Topline, upper bracket | 9 |

General

This booklet applies to type 14 cabs as well as type 19 cabs.

The operation unit location will vary depending on cab type and interior configuration.

When performing service fitting of Water heater DW80 in ADR vehicles, requirements according to national regulations must be met.

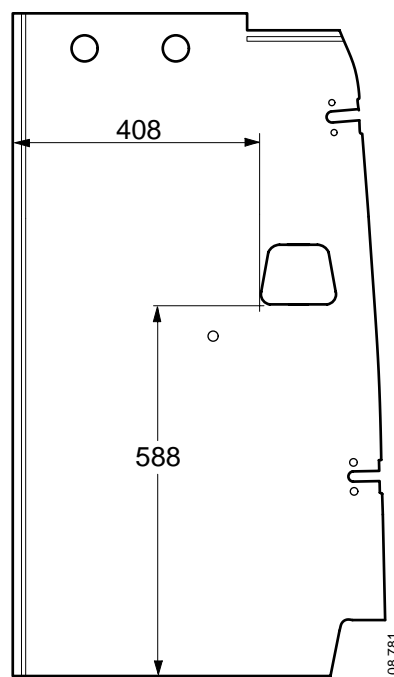
This description applies to LHD and RHD vehicles. However, the illustrations only show LHD vehicles.

Operation unit - Fitting

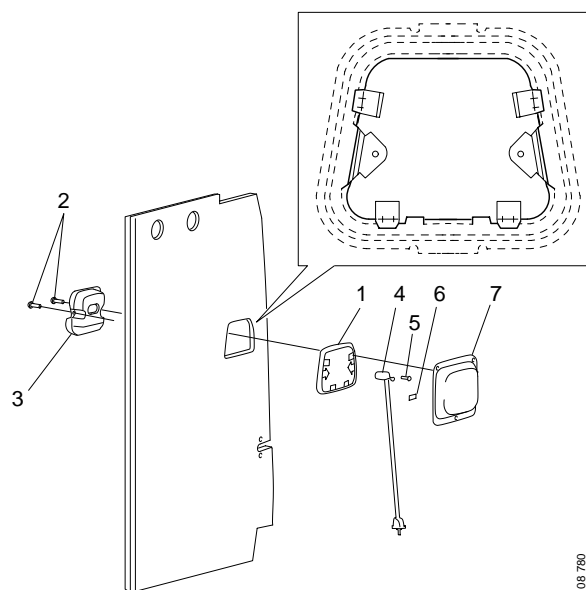
Vehicles with closet

Closet wall

- 1 Use the mounting plate as template and mark up the hole according to the illustration.
- 2 Cut through the upholstery using a sharp knife and cut out the hole using a sabre saw or equal.

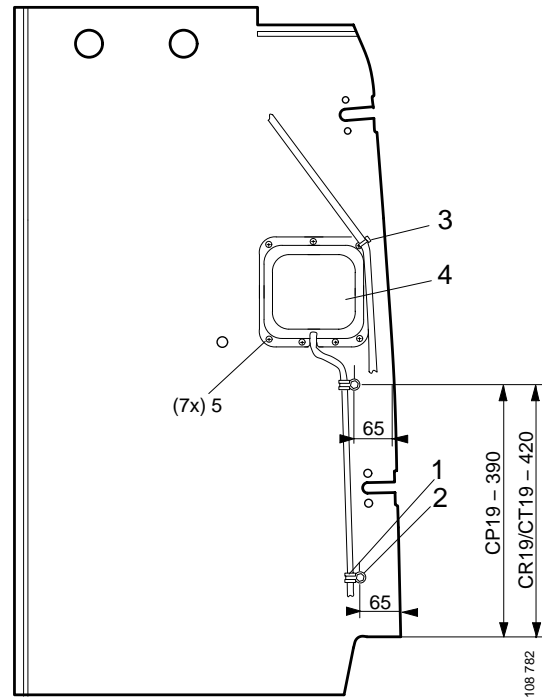


- 3 Fit the mounting plate from the rear of the closet wall and fold over the four sheet metal tabs.
- 4 Fit the wall cable harness to the bracket using two screws 1 396 739. Fit the clip retaining the cable harness to the bracket.
- 5 Pass the cable harness through the hole in the closet wall and secure the bracket to the mounting plate using two screws 1 306 684.



- 1 Mounting plate
- 2 Screws 1 306 684
- 3 Bracket for operation unit
- 4 Wall cable harness
- 5 Screws 1 396 739
- 6 Clip 1 396 740
- 7 Cover

- 6 Fix the harness with rubber clamps and screws as shown.
- 7 Fit the cover with seven screws 815 165. Drill with a 3.5 mm drill through the cover and slightly into the wall.

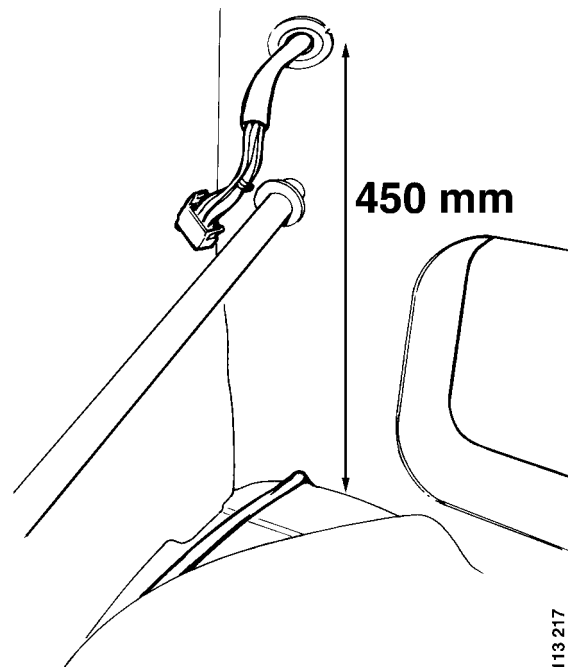


- 1 Clamp 813 933
- 2 Screw 815 518
- 3 Cable tie
- 4 Cover
- 5 Screw 815 165

Side wall

The operation unit shall be placed on the driver's side.

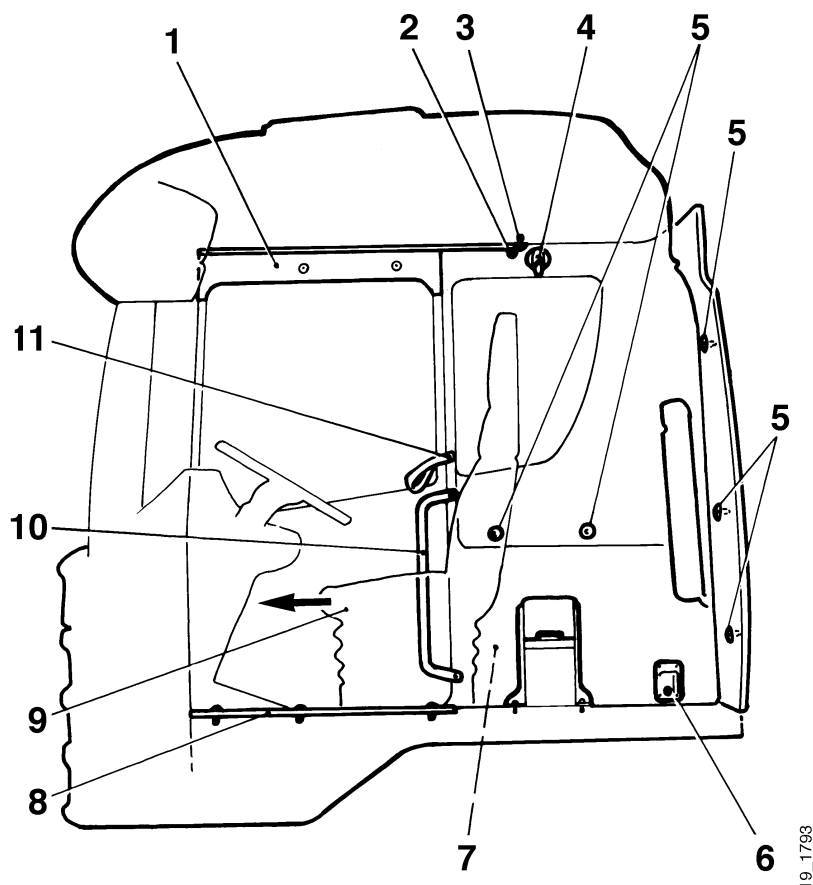
- 8 Detach the tool compartment bezel behind the driver.
- 9 Mark up and cut a 35 mm hole in the wall upholstery as shown.
- 10 Make a slot in the wall upholstery in the lower rear corner as shown.
- 11 Pull up the floor cable harness behind the side upholstery so that the white mark is at the hole.
- 12 Fit the rubber grommet into the hole.
- 13 Fit the tool compartment bezel.



Holes and slot in R cab

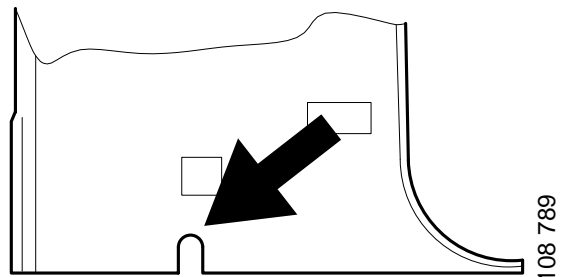
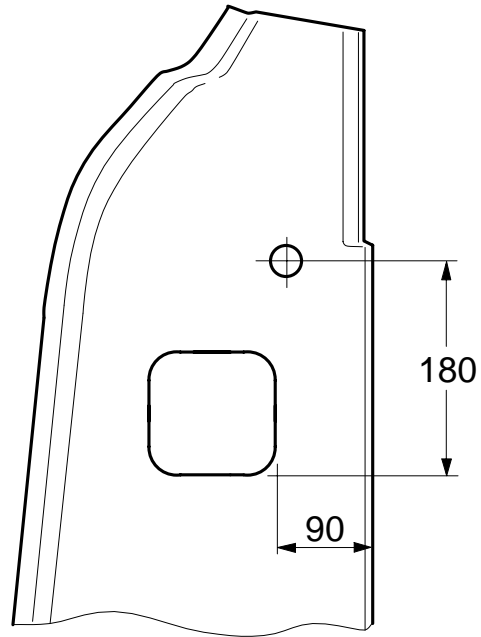
Vehicles without closet

- 1 Detach the tool compartment bezel behind the driver.
- 2 Remove the strip 8 at the threshold.
- 3 Remove the strip 1 above the door.
- 4 Remove the curtain strap 11.
- 5 Push the side curtain 2 forwards.
- 6 Remove the coat hanger 4.
- 7 Remove the boarding handle 11.
- 8 Remove the rear curtain stop 3.
- 9 Remove the five plastic clips 5 from the side panel and the outer edge of the rear wall. Remove the clips by unscrewing the centre screw and then gently prying them loose using a screwdriver or equal.
- 10 Remove the side panel 7 forwards - outwards.

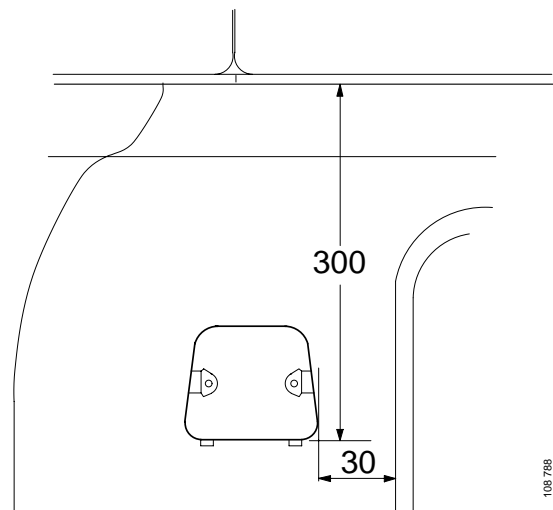


19_1793

- 11 Use the mounting plate as template and mark up the hole according to the illustration. On new upholstery the mounting plate location is marked up from the rear of the panel.
- 12 Cut out the hole using a knife.
- 13 Make a slot in the wall upholstery in the lower rear corner as shown. This applies to type 14 cab as well as type 19 cab.

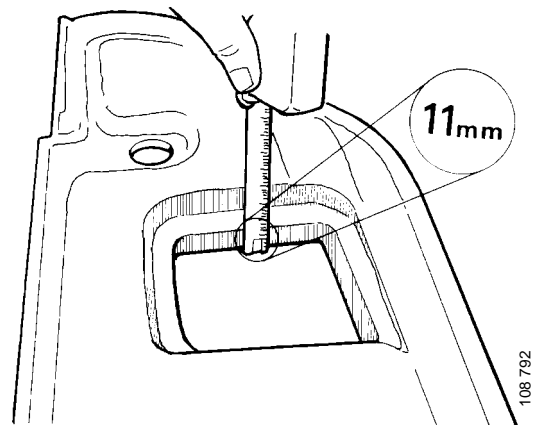


Holes in type 14 cab

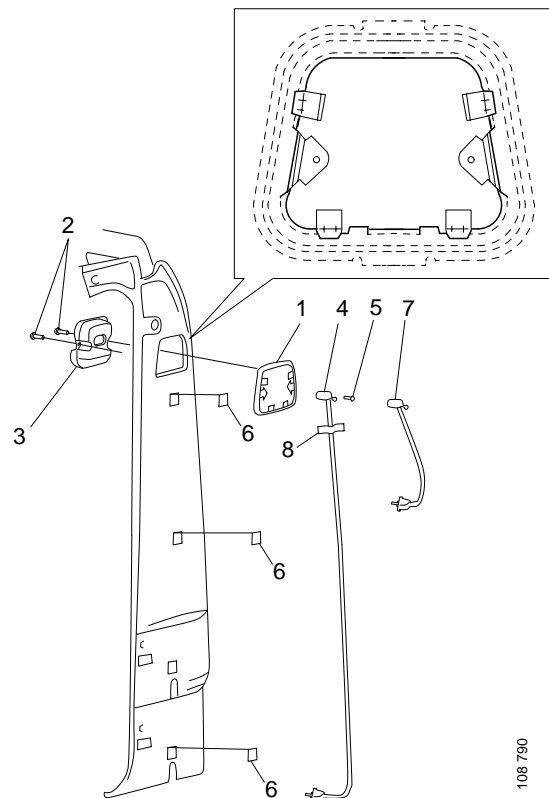


Holes in type 19 cab

- 14 Old panels. Cut out the panel from behind using the mounting plate as template, so that the panel thickness is approx. 11 mm. New panels with marked up position do not need to be cut out.
- 15 Fit the mounting plate from the rear of the closet wall and fold over the four sheet metal tabs.



- 16 Fit the wall cable harness to the bracket using two screws 1 396 739. Fit the clip retaining the cable harness to the bracket.
- 17 Pass the cable harness through the hole in the closet wall and secure the bracket to the mounting plate using two screws 1 306 684.



Note: In type 19 cabs with elevated bed a bracket for the operation unit is also fitted on the passenger's side in series production. This bracket is fitted inverted to that on the driver's side.

- 1 Mounting plate
 2 Screws 1 306 684
 3 Bracket for operation unit
 4 Wall cable harness for type 14 cab
 5 Screws 1 396 739
 6 Cable clamps for type 14 cab
 7 Wall cable harness for type 19 cab
 8 Clip 1 396 740

Principle sketch for type 14 and type 19 cabs

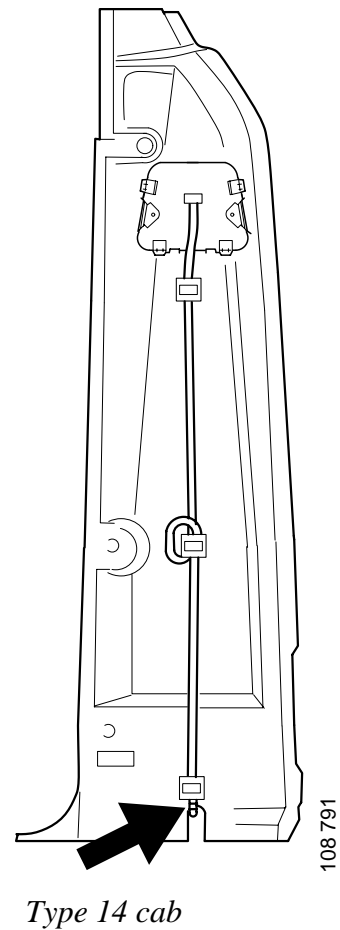
Type 14 cab

18 Secure the cable harness with clips as shown and pull out the cable harness through the slot at the base of the panel. Make a loop on the cable in a P cabin.

19 Fit side panel.

Type 19 cab

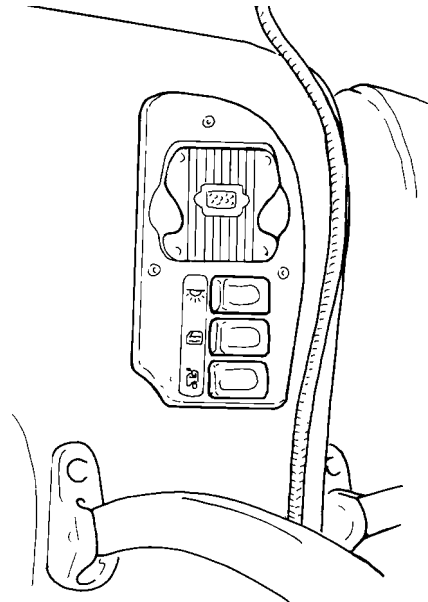
Fit panel when connecting floor cable harness to wall cable harness.



Upper bracket for operation unit in Topline

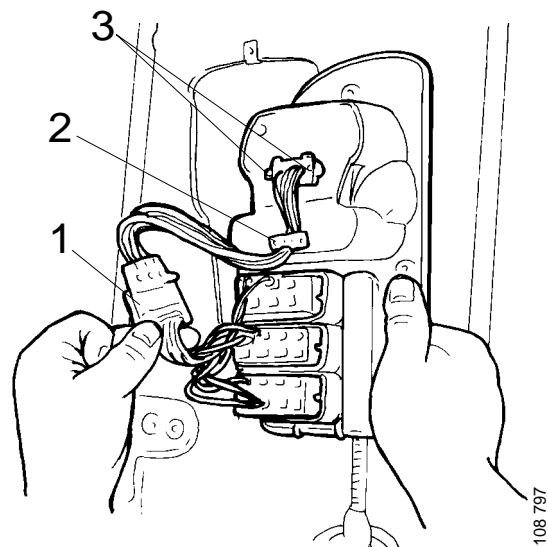
In Topline cabs there is a preinstalled cable harness between floor and ceiling. It extends from the upper switch panel to the floor at the rear centre panel.

- 1 Remove the switch panel at the upper bed.



108 796

- 2 Transfer the switches to a new panel with bracket for the operation unit.
- 3 Connect connector C218 to panel and fit panel.



108 797

- 1 Connector C218
- 2 Clip 1 396 740
- 3 Screw 1 396 739